

**NGI HYGIENIC LEVELLING SYSTEMS IS**  
THE WORLD'S LEADING MANUFACTURER OF **ALL TYPES**  
OF ADJUSTABLE STAINLESS STEEL LEVELLING FEET

WE CONTINUOUSLY **DEVELOP** AND  
**INNOVATE** OUR PRODUCTS AND CONCEPTS  
TO SATISFY THE REQUIREMENTS OF OUR CUSTOMERS

# HYGIENIC LEVELLING FEET

THE **CLASSIC HYGIENIC-ORIENTED DESIGN** FOR MACHINERY AND EQUIPMENT IN **DIVERSE WET PRODUCTION** ENVIRONMENTS

SELF-DRAINING SURFACES, SEALED MOVABLE PARTS AND NO EXPOSED THREAD **REDUCES CLEANING** AND **WATER USAGE**



# PRODUCT GROUP HYGIENIC

All process industries are subject to increasing regulatory requirements, which increases the focus on resource consumption, product safety and hygienic design.

The hygienic levelling feet reduce the water consumption and cleaning resources in addition to lowering the risk of contamination in the production.

Choosing NGI's hygienic levelling feet will secure your machinery with an acceptable hygienic design and contribute to your customer's Return-On-Investment.

## Product Group Features

- Hygienic-oriented design
- Self-draining surfaces and no exposed thread secures minimum cleaning
- All movable parts are hygienically sealed
- Low-friction washer between spindle and footplate ensures easy adjustment
- FDA-approved, anti-vibration, anti-slip rubber blocks out bacteria underneath the footplate
- Stainless steel AISI 304/A2, 1.4301. Optional AISI 316/A4, 1.4401
- More than 1.000 different variations available (weight load, height-adjustment, flexible mounting parts)
- Design and patent protected



## H US

### Special Features

- Height variation 104 mm – 219 mm
- Weight load up to 40.000 N
- Admits up to 10° slope on floors and equipment
- Stainless steel-embedded rubber fixing plate
- Vulcanized, FDA-approved, anti-vibration, anti-slip rubber
- Optional fixing to the floor

86



## HT US

### Special Features

- Height variation 103 mm – 219 mm
- Weight load up to 40.000 N
- Admits up to 15° slope on floors and equipment
- The footplate and spindle are two separate parts
- Diametrically centered elevation on the footplate
- Vulcanized, FDA-approved, anti-vibration, anti-slip rubber

102



## HG US

### Special Features

- Height variation 99 mm – 206 mm
- Weight load up to 80.000 N due to solid footplate
- Admits up to 10° slope on floors and equipment
- Optional anti-slip rubber

94



## HGT US

### Special Features

- Height variation 99 mm – 206 mm
- Weight load up to 80.000 N due to solid footplate
- Admits up to 15° slope on floors and equipment
- The footplate and spindle are two separate parts
- Diametrically centered elevation on the footplate
- Optional anti-slip rubber

104



## HJ US

### Special Features

- Height variation 99 mm – 206 mm
- Weight load up to 80.000 N due to solid footplate
- Admits up to 10° slope on floors and equipment
- Fixing to the floor
- Optional anti-slip rubber

98



## M US

### Special Features

- Height variation 102 mm – 218 mm
- Weight load up to 14.000 N
- Admits up to 5° slope on floors and equipment
- Optional fixing to the floor
- Vulcanized, FDA-approved, anti-vibration, anti-slip rubber

108

# ACCESSORIES HYGIENIC

NGI is able to deliver all necessary accessories, which ensures a quick and easy installation of the levelling foot. In addition to supplying standardized accessories we are also able to supply customized accessories.



## NUTS & WASHERS

- Stainless steel AISI 304/A2, 1.4301
- Standard nuts (DIN 934)
- Standard counter nuts (DIN 439)
- Standard flat washers (DIN 125)
- Standard fender washers (DIN 9010)
- All dimensions available

264



## WELDING PLATES

- Stainless steel AISI 304/A2, 1.4301
- Squared welding plates
- Rounded welding plates
- All dimensions available

268



## PLASTIC BUSHES

- Squared plastic bushings
- Round plastic bushings
- Many dimensions available

270



## DOME-HEADED NUTS

- Stainless steel AISI 304/A2, 1.4301
- Standard dome-headed nuts (DIN 1587 A2)
- All dimensions available

266

# INSTRUCTIONS

It is important to follow these instructions in order to ensure the certified hygienic design and functionality. This documentation is enclosed with the levelling feet and should always be handed over to the enduser.



## DECLARATION OF CONFORMITY

This declaration of conformity lists all the directives and standards that NGI adheres to. This ensures that products from NGI are always in compliance with currently valid requirements.

114



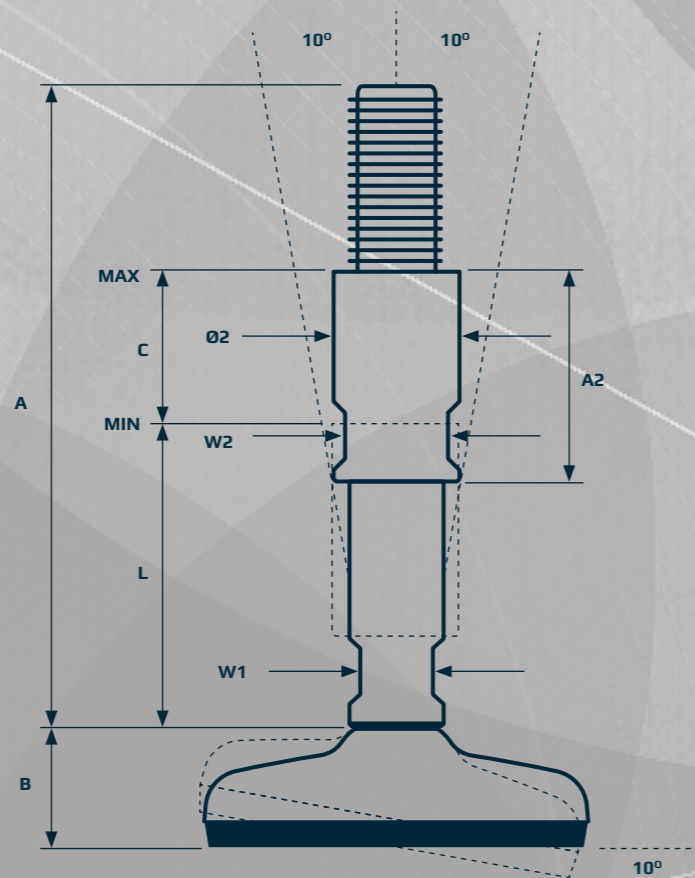
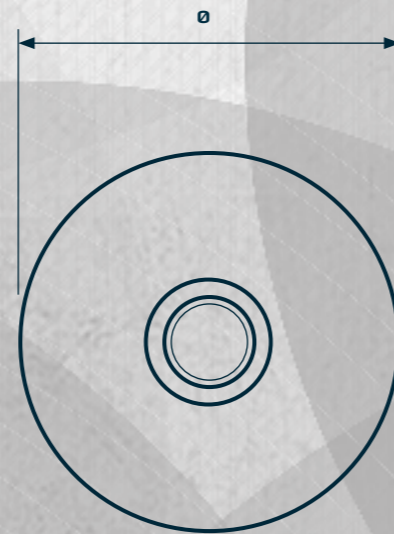
# HYGIENIC LEVELLING FEET H US

The design and patent protected H US levelling foot is the acceptable choice for machinery and equipment that has to comply with hygienic requirements.

The thread is covered with a hygienic sleeve, which also functions as counter nut. All the movable parts are hygienically sealed.

Lowered cleaning effort is obtained by the design of the self-draining surfaces.

Additionally, the foot is hygienically sealed to the floor by vulcanized FDA-approved, anti-vibration, anti-slip rubber, which blocks out bacteria underneath the footplate.



# HYGIENIC LEVELLING FEET H US



PRODUCT CODE	FOOT - SPINDLE - SLEEVE
EXAMPLE	H060-H US16181-RHO1655

## FOOT PLATE



TYPE	DIAMETER Ø [mm]	HEIGHT B [mm]	NOM LOAD COMPRESSION [N]	ITEM CODE
60	60	26	7.000	H060
80	80	28	15.000	H080
100	100	32	20.000	H100
120	120	37	30.000	H120
140	140	39	40.000	H140

## SPINDLE



THREAD	HEIGHT A [mm]	MIN HEIGHT L [mm]	W1 [mm]	NOM LOAD COMPRESSION [N]	ITEM CODE
M16	166	78	13	30.800	H US16181
M16	216	110	13	22.700	H US16231
M20	166	78	15	48.200	H US20181
M20	216	110	15	48.200	H US20231
M24	166	78	19	69.200	H US24181
M24	216	110	19	69.200	H US24231
M30	166	78	24	110.200	H US30181
M30	216	110	24	110.200	H US30231
M36	166	78	30	160.200	H US36181
M36	216	110	30	160.200	H US36231

## SLEEVE



THREAD	W2 [mm]	DIAMETER Ø2 [mm]	HEIGHT A2 [mm]	ADJUSTMENT C [mm]	ITEM CODE
M16	19	24,5	55	40	RHO1655
M16	19	24,5	85	70	RHO1685
M20	24	29,9	55	40	RHO2055
M20	24	29,9	85	70	RHO2085
M24	27	33,0	55	40	RHO2455
M24	27	33,0	85	70	RHO2485
M30	36	39,5	55	36	RHO3055
M30	36	39,5	85	66	RHO3085
M36	46	49,5	55	36	RHO3655
M36	46	49,5	85	66	RHO3685



Total height = A + B  
 Minimum usable height = B + L  
 Maximum usable height = B + L + C  
 Maximum nominal load = Lowest value for footplate or spindle  
 Tolerance of total height = +/- 1,5 mm



# HYGIENIC LEVELLING FEET H US FIXING

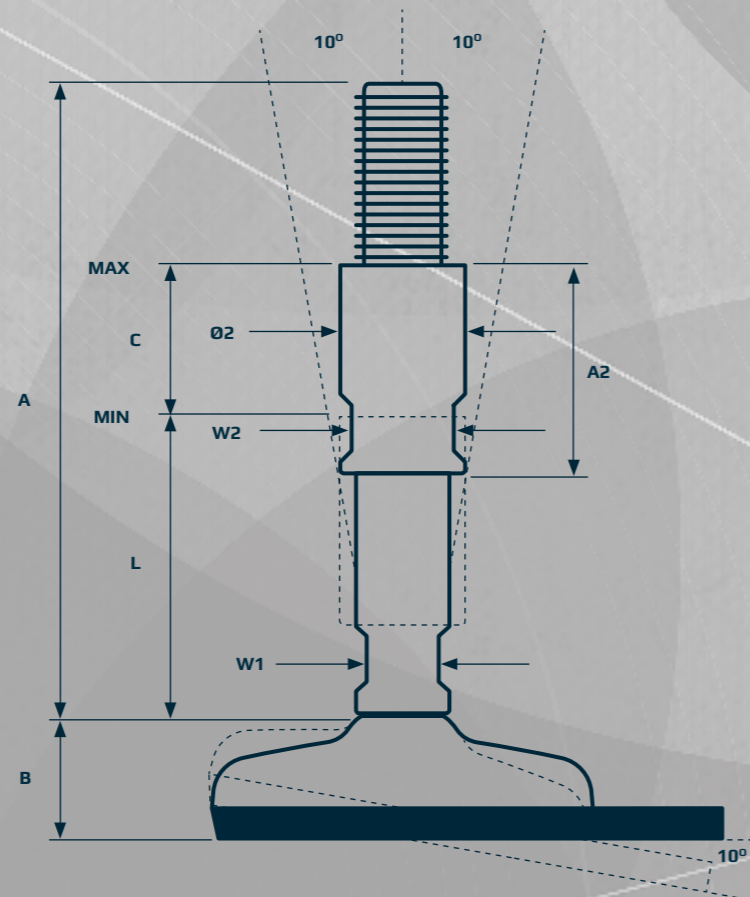
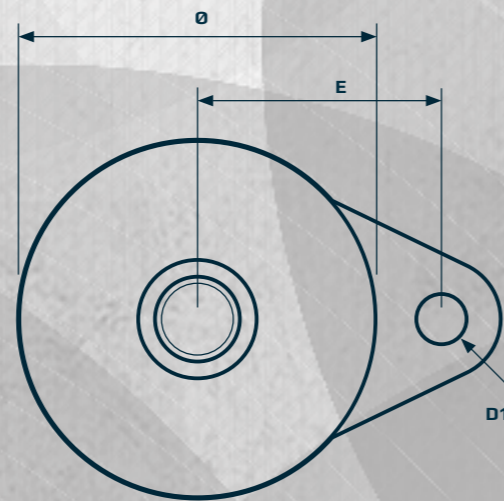
The design and patent protected H US Fixing levelling foot is the acceptable choice for machinery and equipment that has to comply with hygienic requirements.

The H US Fixing is designed to be fastened to the floor by the stainless steel-embedded rubber fixing plate. Bolt, nut and washer can be supplied.

The thread is covered with a hygienic sleeve, which also functions as counter nut. All the movable parts are hygienically sealed.

Lowered cleaning effort is obtained by the design of the self-draining surfaces.

Additionally, the foot is hygienically sealed to the floor by vulcanized FDA-approved, anti-vibration, anti-slip rubber, which blocks out bacteria underneath the footplate.

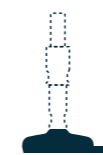


# HYGIENIC LEVELLING FEET H US FIXING



PRODUCT CODE	FOOT - SPINDLE - SLEEVE
EXAMPLE	H081 - H US16181 - RHO1655

## FOOT PLATE



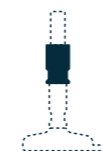
TYPE	DIAMETER Ø [mm]	HEIGHT B [mm]	HOLE POSITION E [mm]	HOLE DIAMETER D1 [mm]	NOM LOAD COMPRESSION [N]	ITEM CODE
81	80	28	58	14	15.000	H081
101	100	33	68	14	20.000	H101

## SPINDLE



THREAD	HEIGHT A [mm]	MIN HEIGHT L [mm]	W1 [mm]	NOM LOAD COMPRESSION [N]	ITEM CODE
M16	166	78	13	30.800	H US16181
M16	216	110	13	22.700	H US16231
M20	166	78	15	48.200	H US20181
M20	216	110	15	48.200	H US20231
M24	166	78	19	69.200	H US24181
M24	216	110	19	69.200	H US24231
M30	166	78	24	110.200	H US30181
M30	216	110	24	110.200	H US30231
M36	166	78	30	160.200	H US36181
M36	216	110	30	160.200	H US36231

## SLEEVE



THREAD	W2 [mm]	DIAMETER Ø2 [mm]	HEIGHT A2 [mm]	ADJUSTMENT C [mm]	ITEM CODE
M16	19	24,5	55	40	RHO1655
M16	19	24,5	85	70	RHO1685
M20	24	29,9	55	40	RHO2055
M20	24	29,9	85	70	RHO2085
M24	27	33,0	55	40	RHO2455
M24	27	33,0	85	70	RHO2485
M30	36	39,5	55	36	RHO3055
M30	36	39,5	85	66	RHO3085
M36	46	49,5	55	36	RHO3655
M36	46	49,5	85	66	RHO3685



Total height = A + B  
 Minimum usable height = B + L  
 Maximum usable height = B + L + C  
 Maximum nominal load = Lowest value for footplate or spindle  
 Tolerance of total height = +/- 1,5 mm



# HYGIENIC LEVELLING FEET H US 2 FIXING

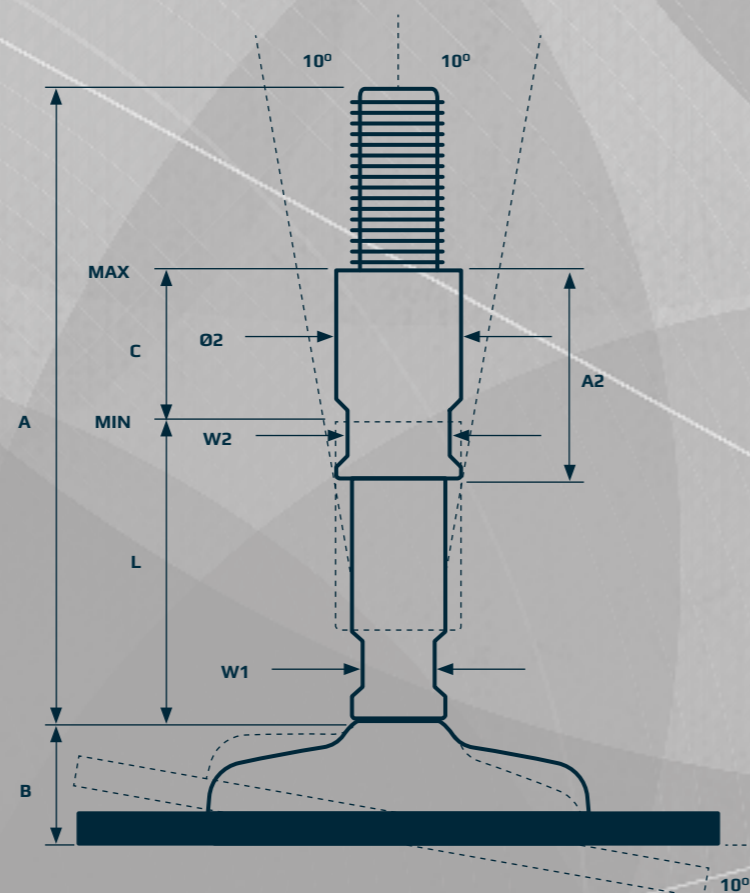
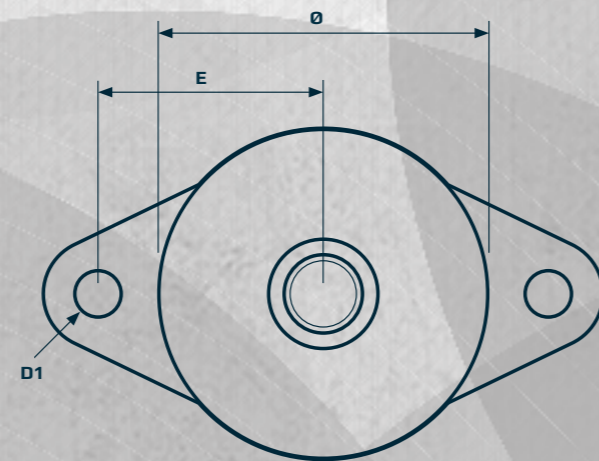
The design and patent protected H US Double Fixing levelling foot is the acceptable choice for machinery and equipment that has to comply with hygienic requirements.

The H US Double Fixing is designed to be fastened to the floor by the two stainless steel-embedded rubber fixing plates. Bolts, nuts and washers can be supplied.

The thread is covered with a hygienic sleeve, which also functions as a counter nut. All the movable parts are hygienically sealed.

Lowered cleaning effort is obtained by the design of the self-draining surfaces.

Additionally, the foot is hygienically sealed to the floor by vulcanized FDA-approved, anti-vibration, anti-slip rubber, which blocks out bacteria underneath the footplate.

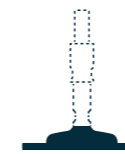


# HYGIENIC LEVELLING FEET H US 2 FIXING



PRODUCT CODE	FOOT - SPINDLE - SLEEVE
EXAMPLE	H082-H US16181-RHO1655

## FOOT PLATE



TYPE	DIAMETER Ø [mm]	HEIGHT B [mm]	HOLE POSITION E [mm]	HOLE DIAMETER D1 [mm]	NOM LOAD COMPRESSION [N]	ITEM CODE
82	80	28	58	14	15.000	H082

## SPINDLE



THREAD	HEIGHT A [mm]	MIN HEIGHT L [mm]	W1 [mm]	NOM LOAD COMPRESSION [N]	ITEM CODE
M16	166	78	13	30.800	H US16181
M16	216	110	13	22.700	H US16231
M20	166	78	15	48.200	H US20181
M20	216	110	15	48.200	H US20231
M24	166	78	19	69.200	H US24181
M24	216	110	19	69.200	H US24231
M30	166	78	24	110.200	H US30181
M30	216	110	24	110.200	H US30231
M36	166	78	30	160.200	H US36181
M36	216	110	30	160.200	H US36231

## SLEEVE



THREAD	W2 [mm]	DIAMETER Ø2 [mm]	HEIGHT A2 [mm]	ADJUSTMENT C [mm]	ITEM CODE
M16	19	24,5	55	40	RHO1655
M16	19	24,5	85	70	RHO1685
M20	24	29,9	55	40	RHO2055
M20	24	29,9	85	70	RHO2085
M24	27	33,0	55	40	RHO2455
M24	27	33,0	85	70	RHO2485
M30	36	39,5	55	36	RHO3055
M30	36	39,5	85	66	RHO3085
M36	46	49,5	55	36	RHO3655
M36	46	49,5	85	66	RHO3685



Total height  
Minimum usable height  
Maximum usable height  
Maximum nominal load  
Tolerance of total height

= A + B  
= B + L  
= B + L + C  
= Lowest value for footplate or spindle  
= +/- 1,5 mm



# HYGIENIC LEVELLING FEET H61 US FIXING

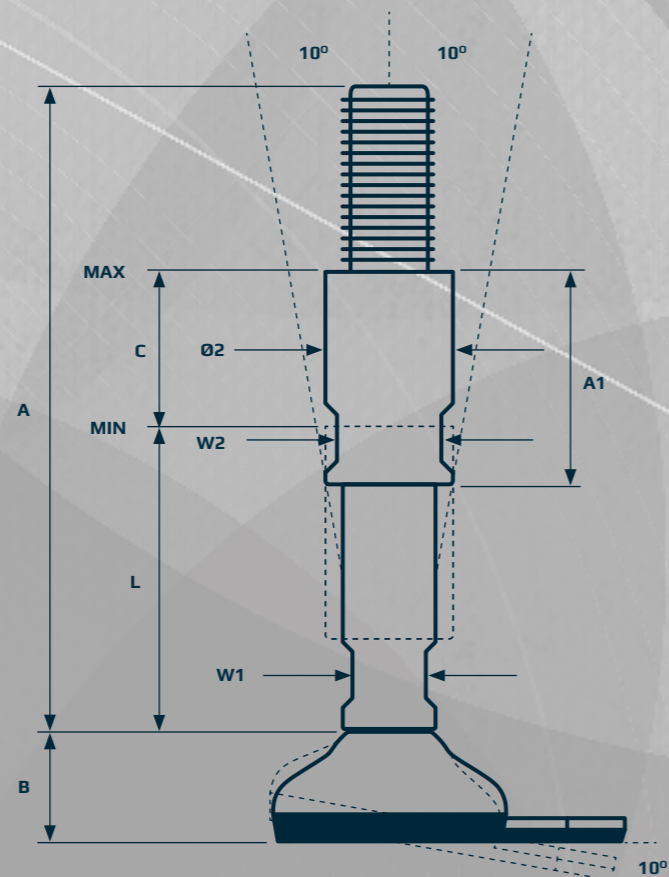
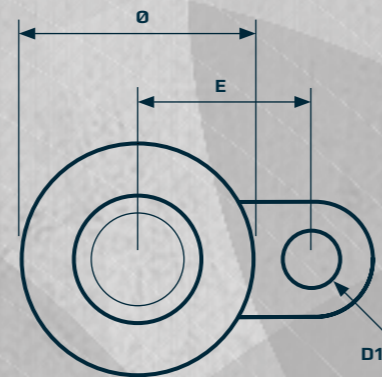
The design and patent protected H61 US Fixing levelling foot is the acceptable choice for low-weight machinery and equipment that has to comply with hygienic requirements.

The H61 US Fixing is designed to be fastened to the floor by the fixing plate. Bolt, nut and washer can be supplied.

The thread is covered with a hygienic sleeve, which also functions as a counter nut. All the movable parts are hygienically sealed.

Lowered cleaning effort is obtained by the design of the self-draining surfaces.

Additionally, the foot is hygienically sealed to the floor by vulcanized FDA-approved, anti-vibration, anti-slip rubber, which blocks out bacteria underneath the footplate.



# HYGIENIC LEVELLING FEET H61 US FIXING



PRODUCT CODE	FOOT - SPINDLE - SLEEVE
EXAMPLE	H061 - H US16181 - RHO1655

## FOOT PLATE



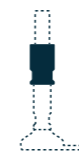
TYPE	DIAMETER Ø [mm]	HEIGHT B [mm]	HOLE POSITION E [mm]	HOLE DIAMETER D1 [mm]	NOM LOAD COMPRESSION [N]	ITEM CODE
61	60	29	45	15	7.000	H061

## SPINDLE



THREAD	HEIGHT A [mm]	MIN HEIGHT L [mm]	W1 [mm]	NOM LOAD COMPRESSION [N]	ITEM CODE
M16	166	78	13	30.800	H US16181
M16	216	110	13	22.700	H US16231
M20	166	78	15	48.200	H US20181
M20	216	110	15	48.200	H US20231
M24	166	78	19	69.200	H US24181
M24	216	110	19	69.200	H US24231
M30	166	78	24	110.200	H US30181
M30	216	110	24	110.200	H US30231
M36	166	78	30	160.200	H US36181
M36	216	110	30	160.200	H US36231

## SLEEVE



THREAD	W2 [mm]	DIAMETER Ø2 [mm]	HEIGHT A2 [mm]	ADJUSTMENT C [mm]	ITEM CODE
M16	19	24,5	55	40	RHO1655
M16	19	24,5	85	70	RHO1685
M20	24	29,9	55	40	RHO2055
M20	24	29,9	85	70	RHO2085
M24	27	33,0	55	40	RHO2455
M24	27	33,0	85	70	RHO2485
M30	36	39,5	55	36	RHO3055
M30	36	39,5	85	66	RHO3085
M36	46	49,5	55	36	RHO3655
M36	46	49,5	85	66	RHO3685



Total height  
Minimum usable height  
Maximum usable height  
Maximum nominal load  
Tolerance of total height

= A + B  
= B + L  
= B + L + C  
= Lowest value for footplate or spindle  
= +/-1,5 mm



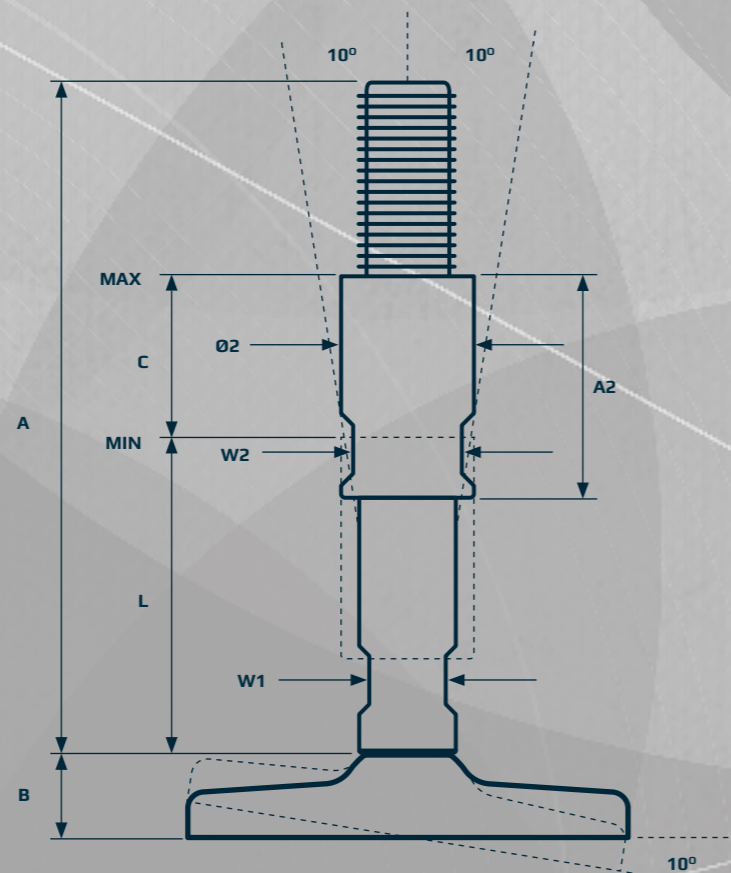
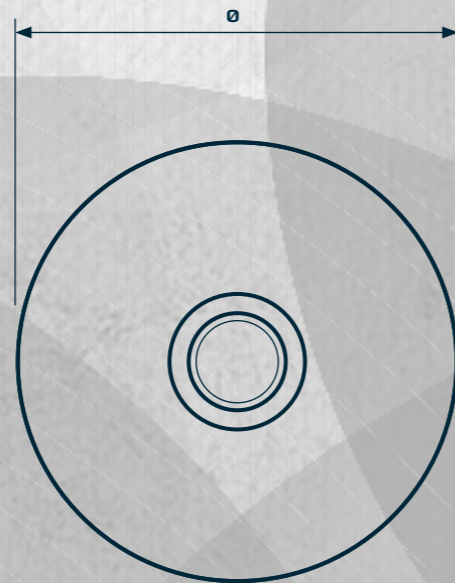


# HYGIENIC LEVELLING FEET HG US

The solid HG US levelling foot is the acceptable choice for heavy-weight machinery and equipment that has to comply with hygienic requirements.

The thread is covered with a hygienic sleeve, which also functions as a counter nut. All the movable parts are hygienically sealed.

Lowered cleaning effort is obtained by the design of the self-draining surfaces.



# HYGIENIC LEVELLING FEET HG US



PRODUCT CODE	FOOT - SPINDLE - SLEEVE
EXAMPLE	HG060 - HJG US16181 - RHO1655

## FOOT PLATE



TYPE	DIAMETER Ø [mm]	HEIGHT B [mm]	NOM LOAD COMPRESSION [N]	ITEM CODE
60	69	21	80.000	HG060
70	69	21	80.000	HG070
90	89	21	80.000	HG090
110	109	21	80.000	HG110
150	149	21	80.000	HG150

## SPINDLE



THREAD	HEIGHT A [mm]	MIN HEIGHT L [mm]	W1 [mm]	NOM LOAD COMPRESSION [N]	ITEM CODE
M16	166	78	13	30.800	HJG US16181
M16	216	110	13	22.700	HJG US16231
M20	166	78	15	48.200	HJG US20181
M20	216	110	15	48.200	HJG US20231
M24	166	78	19	69.200	HJG US24181
M24	216	110	19	69.200	HJG US24231
M30	166	78	24	110.200	HJG US30181
M30	216	110	24	110.200	HJG US30231
M36	166	78	30	160.200	HJG US36181
M36	216	110	30	160.200	HJG US36231

## SLEEVE



THREAD	W2 [mm]	DIAMETER Ø2 [mm]	HEIGHT A2 [mm]	ADJUSTMENT C [mm]	ITEM CODE
M16	19	24,5	55	40	RHO1655
M16	19	24,5	85	70	RHO1685
M20	24	29,9	55	40	RHO2055
M20	24	29,9	85	70	RHO2085
M24	27	33,0	55	40	RHO2455
M24	27	33,0	85	70	RHO2485
M30	36	39,5	55	36	RHO3055
M30	36	39,5	85	66	RHO3085
M36	46	49,5	55	36	RHO3655
M36	46	49,5	85	66	RHO3685



Total height = A + B  
 Minimum usable height = B + L  
 Maximum usable height = B + L + C  
 Maximum nominal load = Lowest value for footplate or spindle  
 Tolerance of total height = +/- 1,5 mm



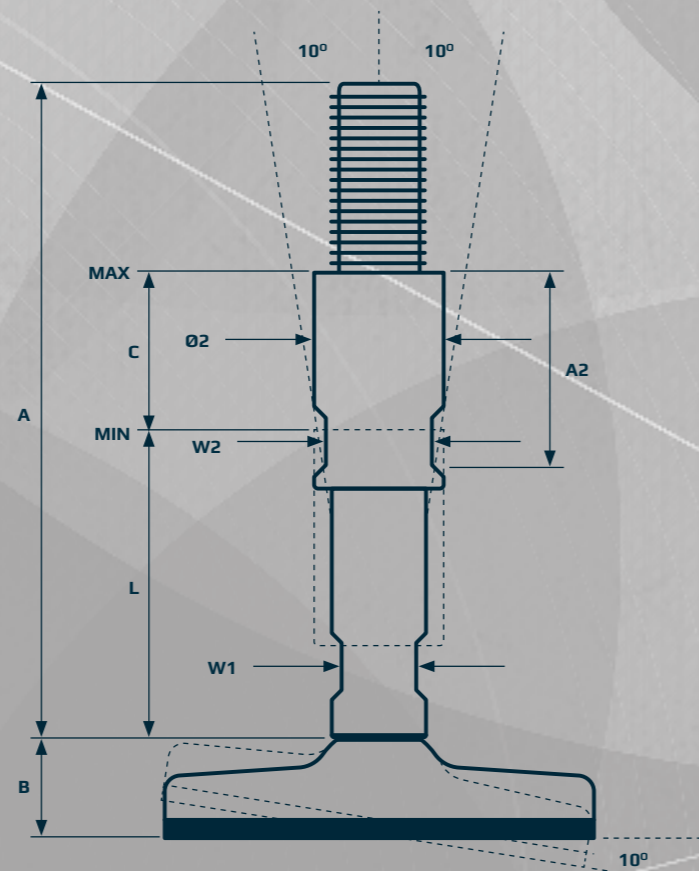
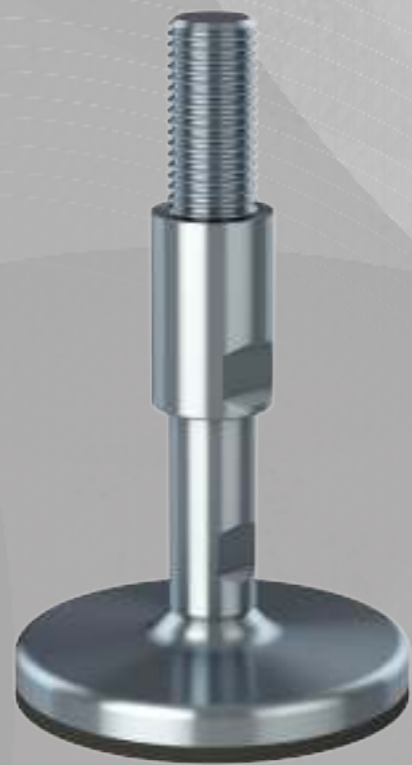
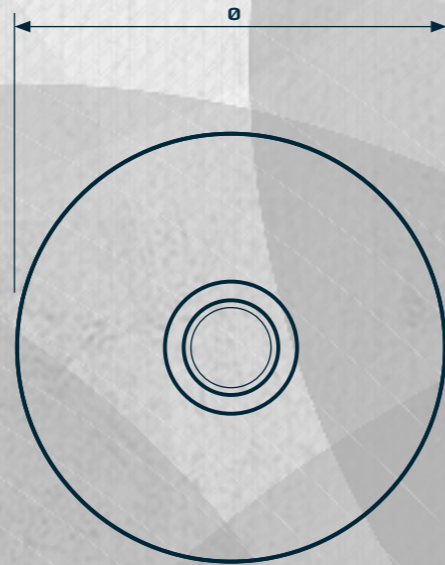
# HYGIENIC LEVELLING FEET HG US AS

The solid HG US AS levelling foot is the acceptable choice for heavy-weight machinery and equipment that has to comply with hygienic requirements.

The thread is covered with a hygienic sleeve, which also functions as counter nut. All the movable parts are hygienically sealed.

Lowered cleaning effort is obtained by the design of the self-draining surfaces.

Additionally, the foot is sealed to the floor by the anti-slip rubber, which blocks out bacteria underneath the footplate.



# HYGIENIC LEVELLING FEET HG US AS



PRODUCT CODE

FOOT - SPINDLE - SLEEVE

EXAMPLE

HG060AS-HJG US16181-RHO1655

## FOOT PLATE



TYPE	DIAMETER Ø [mm]	HEIGHT B [mm]	NOM LOAD COMPRESSION [N]	ITEM CODE
60AS	69	26	30.000	HG060AS
70AS	69	26	30.000	HG070AS
90AS	89	26	30.000	HG090AS
110AS	109	26	30.000	HG110AS
150AS	149	26	30.000	HG150AS

## SPINDLE



THREAD	HEIGHT A [mm]	MIN HEIGHT L [mm]	W1 [mm]	NOM LOAD COMPRESSION [N]	ITEM CODE
M16	166	78	13	30.800	HJG US16181
M16	216	110	13	22.700	HJG US16231
M20	166	78	15	48.200	HJG US20181
M20	216	110	15	48.200	HJG US20231
M24	166	78	19	69.200	HJG US24181
M24	216	110	19	69.200	HJG US24231
M30	166	78	24	110.200	HJG US30181
M30	216	110	24	110.200	HJG US30231
M36	166	78	30	160.200	HJG US36181
M36	216	110	30	160.200	HJG US36231

## SLEEVE



THREAD	W2 [mm]	DIAMETER Ø2 [mm]	HEIGHT A2 [mm]	ADJUSTMENT C [mm]	ITEM CODE
M16	19	24,5	55	40	RHO1655
M16	19	24,5	85	70	RHO1685
M20	24	29,9	55	40	RHO2055
M20	24	29,9	85	70	RHO2085
M24	27	33,0	55	40	RHO2455
M24	27	33,0	85	70	RHO2485
M30	36	39,5	55	36	RHO3055
M30	36	39,5	85	66	RHO3085
M36	46	49,5	55	36	RHO3655
M36	46	49,5	85	66	RHO3685

Total height  
Minimum usable height  
Maximum usable height  
Maximum nominal load  
Tolerance of total height  
AS

= A + B  
= B + L  
= B + L + C  
= Lowest value for footplate or spindle  
= +/-1,5 mm  
= Anti-Slip



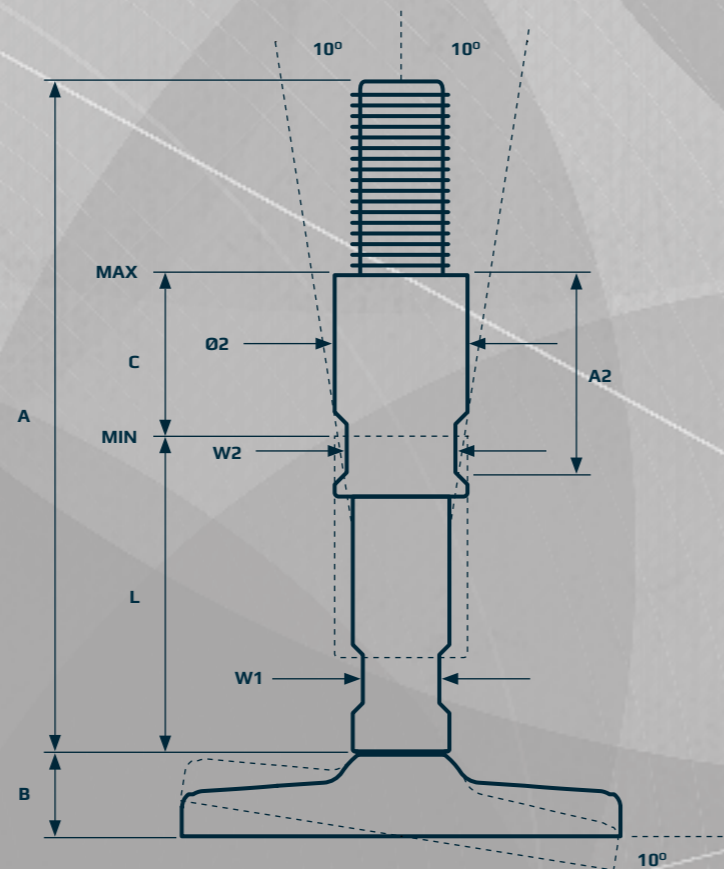
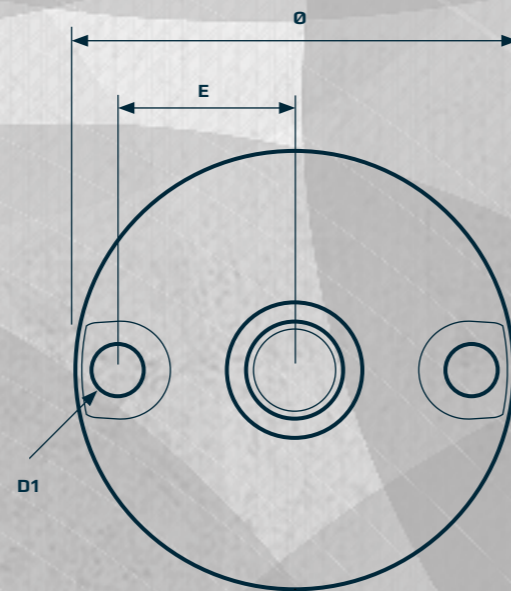
# HYGIENIC LEVELLING FEET HJ US

The solid HJ US levelling foot is the acceptable choice for heavy-weight machinery and equipment that has to comply with hygienic requirements.

The HJ US is designed to be fastened to the floor by the two fixing holes in the footplate. Bolts, nuts and washers can be supplied.

The thread is covered with a hygienic sleeve, which also functions as counter nut. All the movable parts are hygienically sealed.

Lowered cleaning effort is obtained by the design of the self-draining surfaces.



# HYGIENIC LEVELLING FEET HJ US



PRODUCT CODE

FOOT - SPINDLE - SLEEVE

EXAMPLE

HJ080-HJG US16181-RHO1655

## FOOT PLATE

TYPE	DIAMETER Ø [mm]	HEIGHT B [mm]	HOLE POSITION E [mm]	HOLE DIAMETER D1 [mm]	NOM LOAD COMPRESSION [N]	ITEM CODE
80	79	21	27	8,5	80.000	HJ080
90	89	21	32	13,0	80.000	HJ090
110	109	21	44	13,0	80.000	HJ110
150	149	21	62	16,0	80.000	HJ150



## SPINDLE

THREAD	HEIGHT A [mm]	MIN HEIGHT L [mm]	W1 [mm]	NOM LOAD COMPRESSION [N]	ITEM CODE
M16	166	78	13	30.800	HJG US16181
M16	216	110	13	22.700	HJG US16231
M20	166	78	15	48.200	HJG US20181
M20	216	110	15	48.200	HJG US20231
M24	166	78	19	69.200	HJG US24181
M24	216	110	19	69.200	HJG US24231
M30	166	78	24	110.200	HJG US30181
M30	216	110	24	110.200	HJG US30231
M36	166	78	30	160.200	HJG US36181
M36	216	110	30	160.200	HJG US36231



## SLEEVE

THREAD	DIAMETER Ø2 [mm]	HEIGHT A2 [mm]	ADJUSTMENT C [mm]	ITEM CODE
M16	19	24,5	55	RHO1655
M16	19	24,5	85	RHO1685
M20	24	29,9	55	RHO2055
M20	24	29,9	85	RHO2085
M24	27	33,0	55	RHO2455
M24	27	33,0	85	RHO2485
M30	36	39,5	55	RHO3055
M30	36	39,5	85	RHO3085
M36	46	49,5	55	RHO3655
M36	46	49,5	85	RHO3685



Total height  
Minimum usable height  
Maximum usable height  
Maximum nominal load  
Tolerance of total height

= A + B  
= B + L  
= B + L + C  
= Lowest value for footplate or spindle  
= +/-1,5 mm



# HYGIENIC LEVELLING FEET HJ US AS

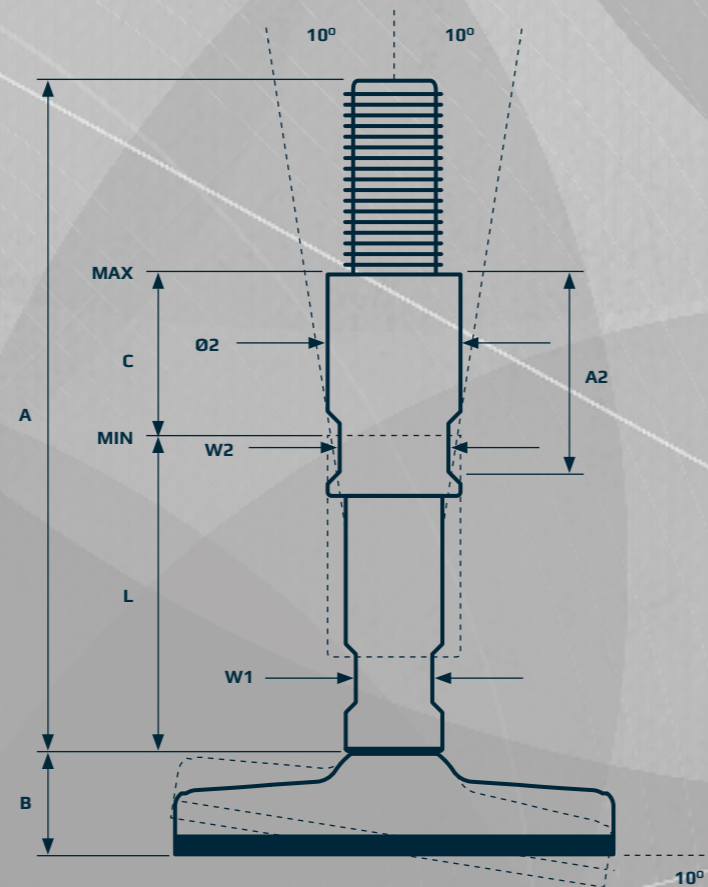
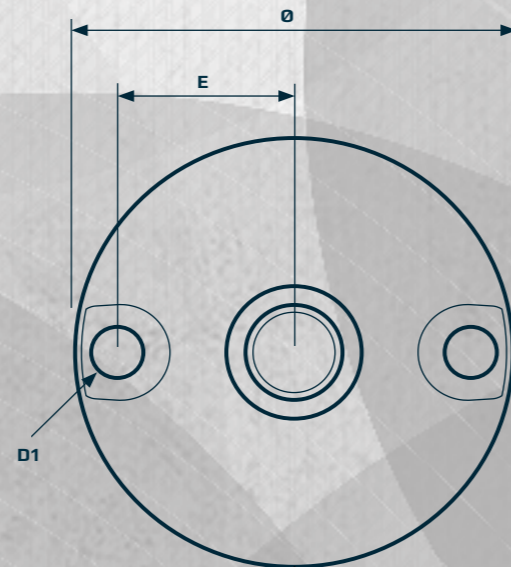
The solid HJ US AS levelling foot is the acceptable choice for heavy-weight machinery and equipment that has to comply with hygienic requirements.

The HJ US AS is designed to be fastened to the floor by the two fixing holes in the footplate. Bolts, nuts and washers can be supplied.

The thread is covered with a hygienic sleeve, which also functions as a counter nut. All the movable parts are hygienically sealed.

Lowered cleaning effort is obtained by the design of the self-draining surfaces.

Additionally, the foot is sealed to the floor by the anti-slip rubber, which blocks out bacteria underneath the footplate.



# HYGIENIC LEVELLING FEET HJ US AS



PRODUCT CODE	FOOT - SPINDLE - SLEEVE
EXAMPLE	HJ080AS-HJG US16181-RHO1655

## FOOT PLATE



TYPE	DIAMETER Ø [mm]	HEIGHT B [mm]	HOLE POSITION E [mm]	HOLE DIAMETER D1 [mm]	NOM LOAD COMPRESSION [N]	ITEM CODE
80AS	80	26	27	8,5	30.000	HJ080AS
90AS	90	26	32	13,0	30.000	HJ090AS
110AS	110	26	44	13,0	30.000	HJ110AS
150AS	150	26	62	16,0	30.000	HJ150AS

## SPINDLE



THREAD	HEIGHT A [mm]	MIN HEIGHT L [mm]	W1 [mm]	NOM LOAD COMPRESSION [N]	ITEM CODE
M16	166	78	13	30.800	HJG US16181
M16	216	110	13	22.700	HJG US16231
M20	166	78	15	48.200	HJG US20181
M20	216	110	15	48.200	HJG US20231
M24	166	78	19	69.200	HJG US24181
M24	216	110	19	69.200	HJG US24231
M30	166	78	24	110.200	HJG US30181
M30	216	110	24	110.200	HJG US30231
M36	166	78	30	160.200	HJG US36181
M36	216	110	30	160.200	HJG US36231

## SLEEVE



THREAD	W2 [mm]	DIAMETER Ø2 [mm]	HEIGHT A2 [mm]	ADJUSTMENT C [mm]	ITEM CODE
M16	19	24,5	55	40	RHO1655
M16	19	24,5	85	70	RHO1685
M20	24	29,9	55	40	RHO2055
M20	24	29,9	85	70	RHO2085
M24	27	33,0	55	40	RHO2455
M24	27	33,0	85	70	RHO2485
M30	36	39,5	55	36	RHO3055
M30	36	39,5	85	66	RHO3085
M36	46	49,5	55	36	RHO3655
M36	46	49,5	85	66	RHO3685

Total height = A + B  
 Minimum usable height = B + L  
 Maximum usable height = B + L + C  
 Maximum nominal load = Lowest value for footplate or spindle  
 Tolerance of total height AS = +/-1,5 mm  
 AS = Anti-Slip



# HYGIENIC LEVELLING FEET HT US

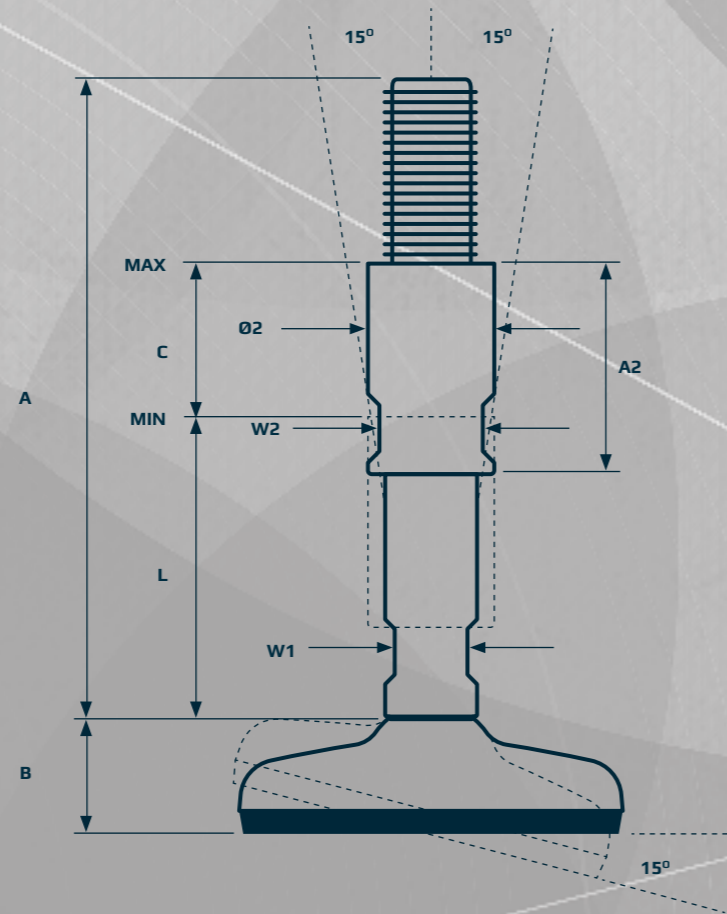
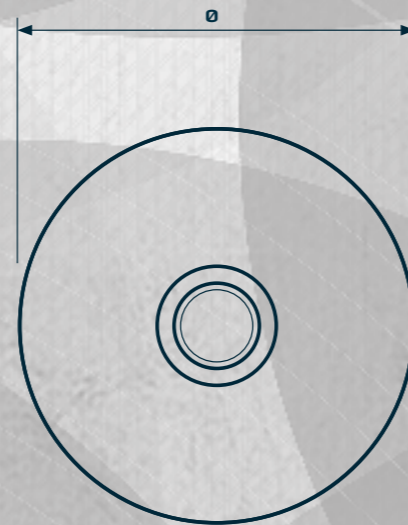
The design and patent protected HT US levelling foot is the acceptable choice for machinery and equipment that has to comply with hygienic requirements.

The HT US consists of a separated footplate and spindle connected by the diametrically centered elevation on the footplate.

The thread is covered with a hygienic sleeve, which also functions as counter nut. All the movable parts are hygienically sealed.

Lowered cleaning effort is obtained by the design of the self-draining surfaces.

Additionally, the foot is hygienically sealed to the floor by vulcanized FDA-approved, anti-vibration, anti-slip rubber, which blocks out bacteria underneath the footplate.



# HYGIENIC LEVELLING FEET HT US



PRODUCT CODE	FOOT - SPINDLE - SLEEVE
EXAMPLE	HT060-HT US16183-RHO1655

## FOOT PLATE



TYPE	DIAMETER Ø [mm]	HEIGHT B [mm]	NOM LOAD COMPRESSION [N]	ITEM CODE
60	60	25	7.000	HT060
80	80	26	15.000	HT080
100	100	30	20.000	HT100
120	120	35	30.000	HT120
140	140	37	40.000	HT140

## SPINDLE



THREAD	HEIGHT A [mm]	MIN HEIGHT L [mm]	W1 [mm]	NOM LOAD COMPRESSION [N]	ITEM CODE
M16	166	78	13	30.800	HT US16183
M16	216	110	13	22.700	HT US16233
M20	166	78	15	48.200	HT US20183
M20	216	110	15	48.200	HT US20233
M24	166	78	19	69.200	HT US24183
M24	216	110	19	69.200	HT US24233
M30	166	78	24	110.200	HT US30183
M30	216	110	24	110.200	HT US30233
M36	166	78	30	160.200	HT US36183
M36	216	110	30	160.200	HT US36233

## SLEEVE



THREAD	W2 [mm]	DIAMETER Ø2 [mm]	HEIGHT A2 [mm]	ADJUSTMENT C [mm]	ITEM CODE
M16	19	24,5	55	40	RHO1655
M16	19	24,5	85	70	RHO1685
M20	24	29,9	55	40	RHO2055
M20	24	29,9	85	70	RHO2085
M24	27	33,0	55	40	RHO2455
M24	27	33,0	85	70	RHO2485
M30	36	39,5	55	36	RHO3055
M30	36	39,5	85	66	RHO3085
M36	46	49,5	55	36	RHO3655
M36	46	49,5	85	66	RHO3685



Total height = A + B  
 Minimum usable height = B + L  
 Maximum usable height = B + L + C  
 Maximum nominal load = Lowest value for footplate or spindle  
 Tolerance of total height = +/- 1,5 mm



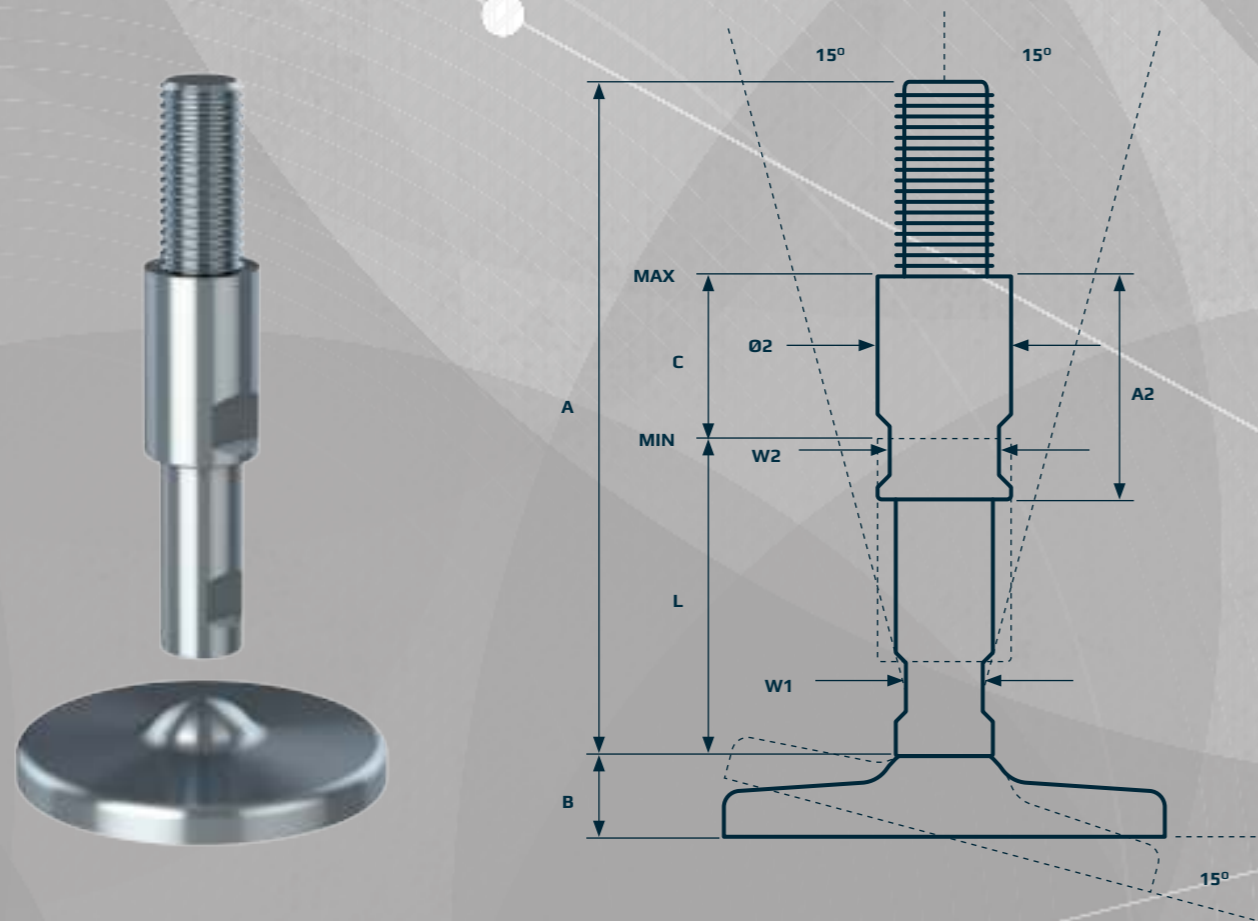
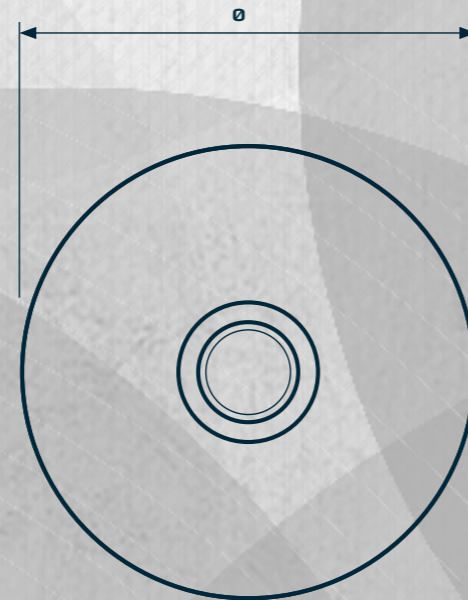
# HYGIENIC LEVELLING FEET HGT US

The solid HGT US levelling foot is the acceptable choice for heavy-weight machinery and equipment that has to comply with hygienic requirements.

The HGT US consists of a separated footplate and spindle connected by the diametrically centered elevation on the footplate.

The thread is covered with a hygienic sleeve, which also functions as a counter nut. All the movable parts are hygienically sealed.

Lowered cleaning effort is obtained by the design of the self-draining surfaces.



# HYGIENIC LEVELLING FEET HGT US



PRODUCT CODE

FOOT - SPINDLE - SLEEVE

EXAMPLE

HGT090-HT US16183-RHO1655

## FOOT PLATE

TYPE	DIAMETER Ø [mm]	HEIGHT B [mm]	NOM LOAD COMPRESSION [N]	ITEM CODE
90	89	20	300.000	HGT090
110	109	20	300.000	HGT110



## SPINDLE

THREAD	HEIGHT A [mm]	MIN HEIGHT L [mm]	W1 [mm]	NOM LOAD COMPRESSION [N]	ITEM CODE
M16	166	78	13	30.800	HT US16183
M16	216	110	13	22.700	HT US16233
M20	166	78	15	48.200	HT US20183
M20	216	110	15	48.200	HT US20233
M24	166	78	19	69.200	HT US24183
M24	216	110	19	69.200	HT US24233
M30	166	78	24	110.200	HT US30183
M30	216	110	24	110.200	HT US30233
M36	166	78	30	160.200	HT US36183
M36	216	110	30	160.200	HT US36233



## SLEEVE

THREAD	W2 [mm]	DIAMETER Ø2 [mm]	HEIGHT A2 [mm]	ADJUSTMENT C [mm]	ITEM CODE
M16	19	24,5	55	40	RHO1655
M16	19	24,5	85	70	RHO1685
M20	24	29,9	55	40	RHO2055
M20	24	29,9	85	70	RHO2085
M24	27	33,0	55	40	RHO2455
M24	27	33,0	85	70	RHO2485
M30	36	39,5	55	36	RHO3055
M30	36	39,5	85	66	RHO3085
M36	46	49,5	55	36	RHO3655
M36	46	49,5	85	66	RHO3685



Total height  
Minimum usable height  
Maximum usable height  
Maximum nominal load  
Tolerance of total height

= A + B  
= B + L  
= B + L + C  
= Lowest value for footplate or spindle  
= +/-1,5 mm



# HYGIENIC LEVELLING FEET HGT US AS

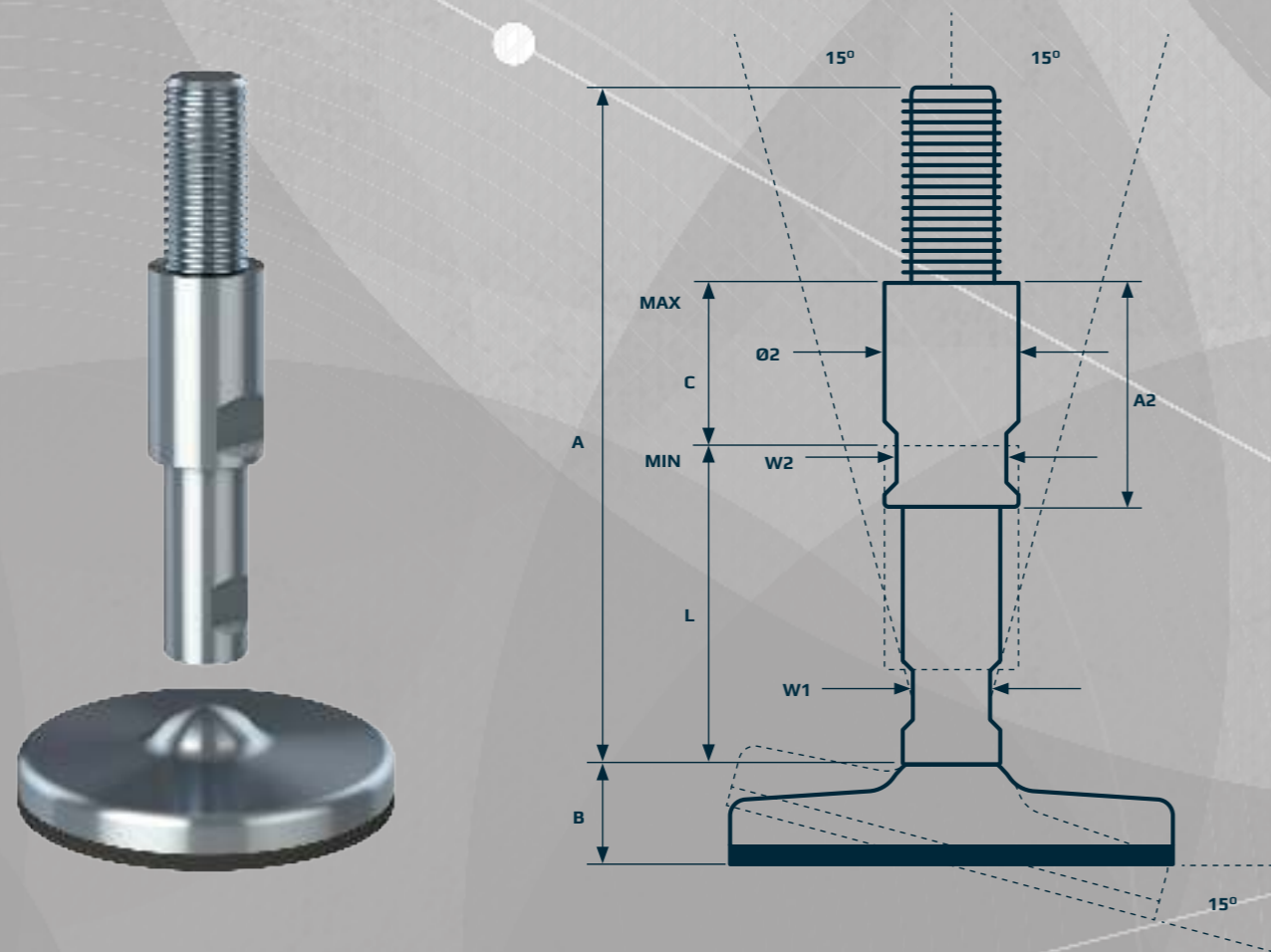
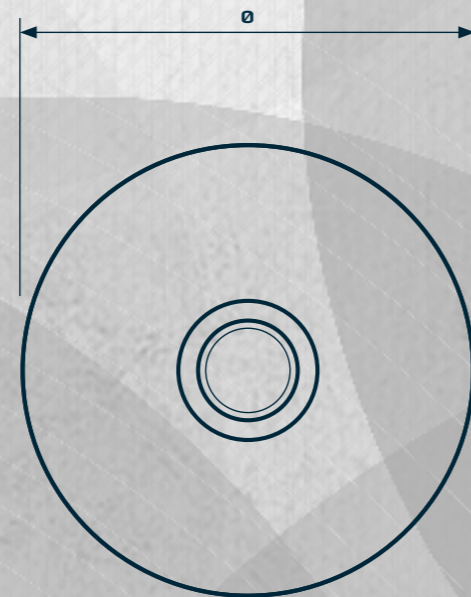
The solid HGT US AS levelling foot is the acceptable choice for heavy-weight machinery and equipment that has to comply with hygienic requirements.

The HGT US AS consists of a separated footplate and spindle connected by the diametrically centered elevation on the footplate.

The thread is covered with a hygienic sleeve, which also functions as a counter nut. All the movable parts are hygienically sealed.

Lowered cleaning effort is obtained by the design of the self-draining surfaces.

Additionally, the foot is sealed to the floor by the anti-slip rubber, which blocks out bacteria underneath the footplate.



# HYGIENIC LEVELLING FEET HGT US AS



PRODUCT CODE	FOOT - SPINDLE - SLEEVE
EXAMPLE	HGT090AS-HT US16183-RHO1655

## FOOT PLATE



TYPE	DIAMETER Ø [mm]	HEIGHT B [mm]	NOM LOAD COMPRESSION [N]	ITEM CODE
90AS	89	25	30.000	HGT090AS
110AS	109	25	30.000	HGT110AS

## SPINDLE



THREAD	HEIGHT A [mm]	MIN HEIGHT L [mm]	W1 [mm]	NOM LOAD COMPRESSION [N]	ITEM CODE
M16	166	78	13	30.800	HT US16183
M16	216	110	13	22.700	HT US16233
M20	166	78	15	48.200	HT US20183
M20	216	110	15	48.200	HT US20233
M24	166	78	19	69.200	HT US24183
M24	216	110	19	69.200	HT US24233
M30	166	78	24	110.200	HT US30183
M30	216	110	24	110.200	HT US30233
M36	166	78	30	160.200	HT US36183
M36	216	110	30	160.200	HT US36233

## SLEEVE



THREAD	W2 [mm]	DIAMETER Ø2 [mm]	HEIGHT A2 [mm]	ADJUSTMENT C [mm]	ITEM CODE
M16	19	24,5	55	40	RHO1655
M16	19	24,5	85	70	RHO1685
M20	24	29,9	55	40	RHO2055
M20	24	29,9	85	70	RHO2085
M24	27	33,0	55	40	RHO2455
M24	27	33,0	85	70	RHO2485
M30	36	39,5	55	36	RHO3055
M30	36	39,5	85	66	RHO3085
M36	46	49,5	55	36	RHO3655
M36	46	49,5	85	66	RHO3685

Total height = A + B  
 Minimum usable height = B + L  
 Maximum usable height = B + L + C  
 Maximum nominal load = Lowest value for footplate or spindle  
 Tolerance of total height AS = +/-1,5 mm  
 AS = Anti-Slip



# HYGIENIC LEVELLING FEET M US

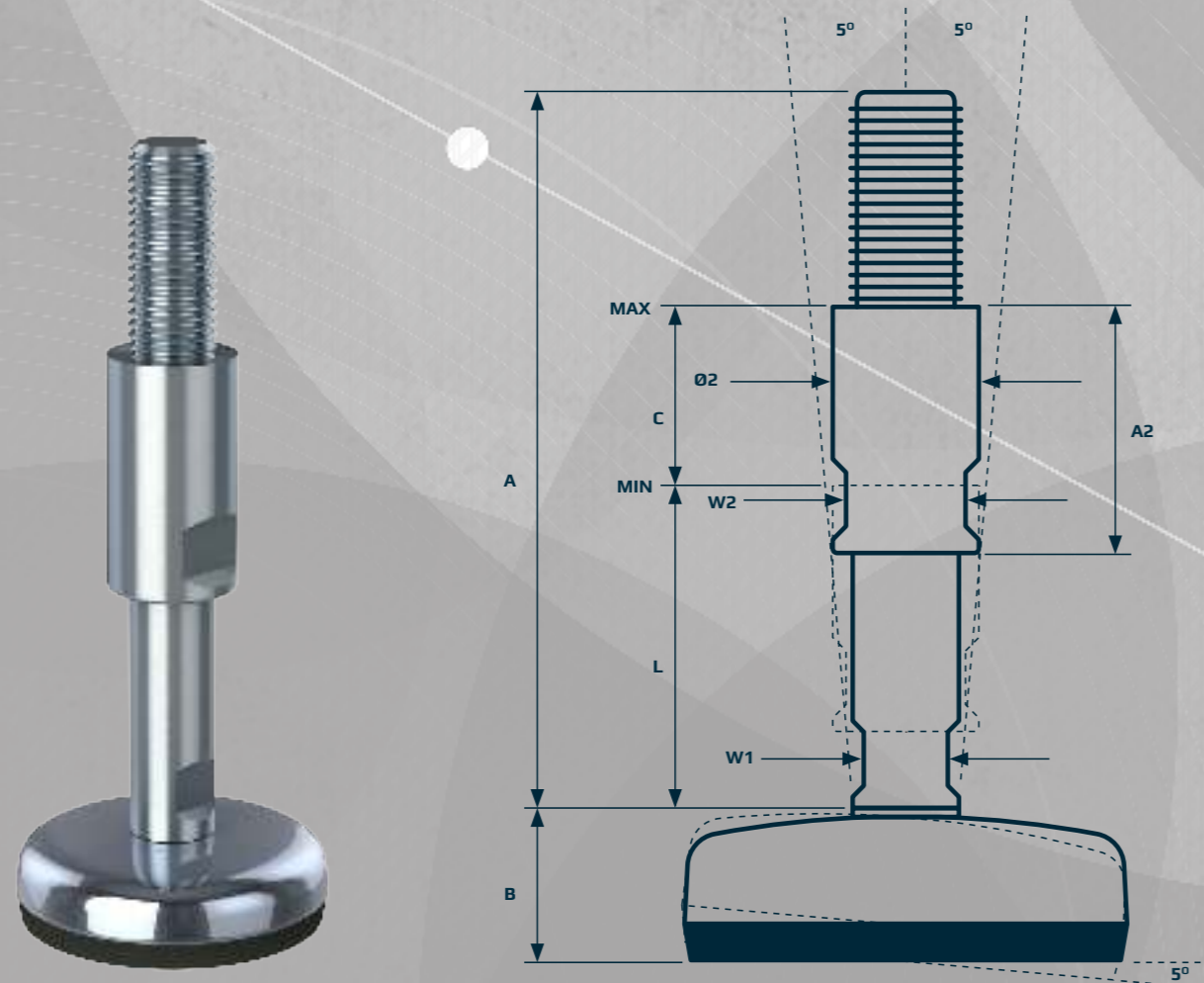
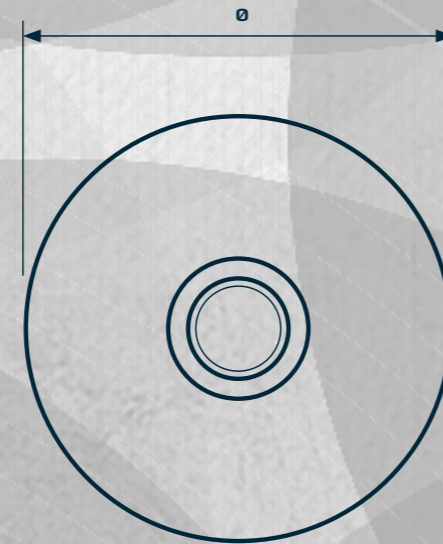
The design and patent protected M US levelling foot is the acceptable choice for machinery and equipment that has to comply with hygienic requirements.

The wide footplate variety makes Type M US applicable to all sizes of machinery and equipment.

The thread is covered with a hygienic sleeve, which also functions as a counter nut. All the movable parts are hygienically sealed.

Lowered cleaning effort is obtained by the design of the self-draining surfaces.

Additionally, the foot is hygienically sealed to the floor by vulcanized FDA-approved, anti-vibration, anti-slip rubber, which blocks out bacteria underneath the footplate.



# HYGIENIC LEVELLING FEET M US



PRODUCT CODE	FOOT - SPINDLE - SLEEVE
EXAMPLE	M040-M US16182-RHO1655

## FOOT PLATE



TYPE	DIAMETER Ø [mm]	HEIGHT B [mm]	NOM LOAD COMPRESSION [N]	ITEM CODE
40	40	22	2.500	M040
50	50	23	4.000	M050
75	75	24	10.000	M075
100	100	34	22.000	M100
105	100	32	12.000	M105
125	125	39	30.000	M125
150	150	42	45.000	M150
180	180	42	50.000	M180

## SPINDLE



THREAD	HEIGHT A [mm]	MIN HEIGHT L [mm]	W1 [mm]	NOM LOAD COMPRESSION [N]	ITEM CODE
M16	166	78	13	30.800	M US16182
M16	216	110	13	22.700	M US16232
M20	166	78	15	48.200	M US20182
M20	216	110	15	48.200	M US20232
M24	166	78	19	69.200	M US24182
M24	216	110	19	69.200	M US24232
M30	166	78	24	110.200	M US30182
M30	216	110	24	110.200	M US30232
M36	166	78	30	160.200	M US36182
M36	216	110	30	160.200	M US36232

## SLEEVE



THREAD	W2 [mm]	DIAMETER Ø2 [mm]	HEIGHT A2 [mm]	ADJUSTMENT C [mm]	ITEM CODE
M16	19	24,5	55	40	RHO1655
M16	19	24,5	85	70	RHO1685
M20	24	29,9	55	40	RHO2055
M20	24	29,9	85	70	RHO2085
M24	27	33,0	55	40	RHO2455
M24	27	33,0	85	70	RHO2485
M30	36	39,5	55	36	RHO3055
M30	36	39,5	85	66	RHO3085
M36	46	49,5	55	36	RHO3655
M36	46	49,5	85	66	RHO3685

Total height  
Minimum usable height  
Maximum usable height  
Maximum nominal load  
Tolerance of total height

= A + B  
= B + L  
= B + L + C  
= Lowest value for footplate or spindle  
= +/- 1,5 mm





# HYGIENIC LEVELLING FEET M US FIXING

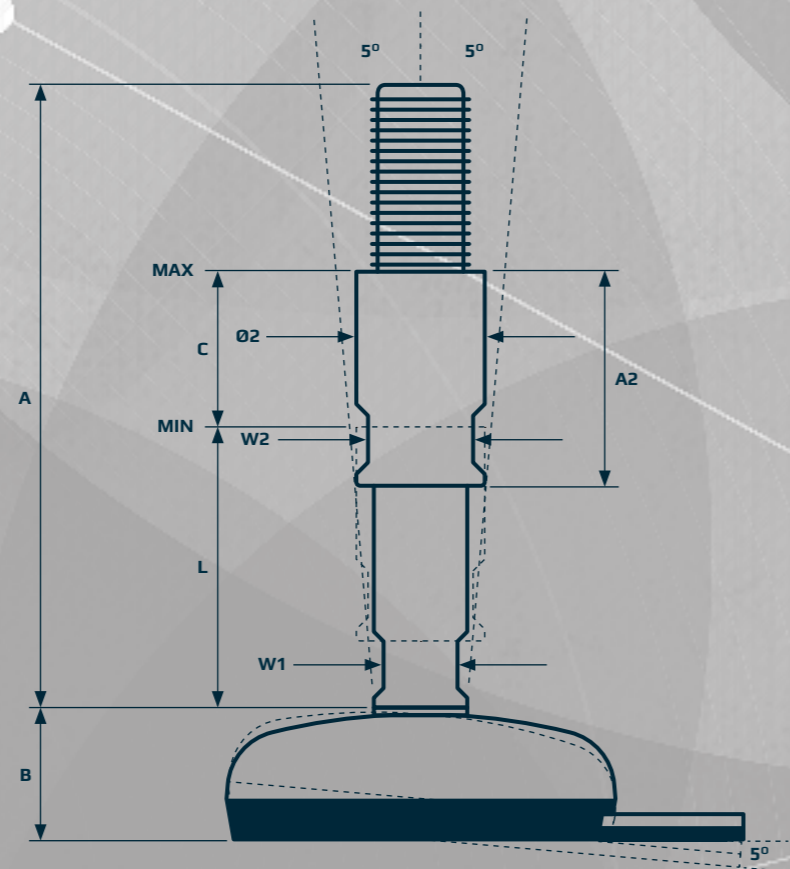
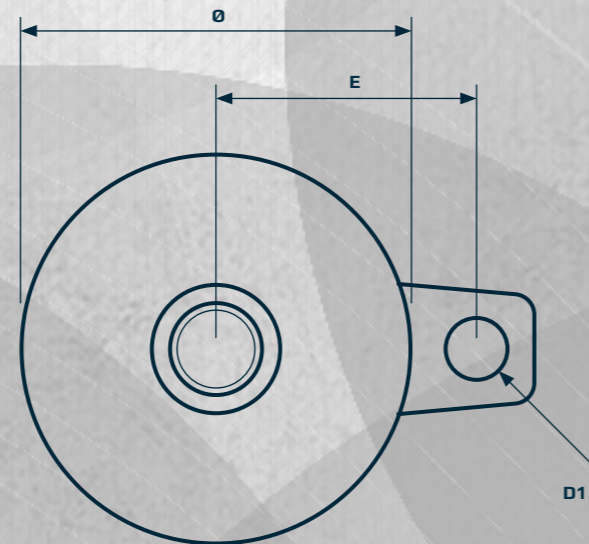
The design and patent protected M US Fixing levelling foot is the acceptable choice for machinery and equipment that has to comply with hygienic requirements.

The M US Fixing is designed to be fastened to the floor by the fixing plate. Bolt, nut and washer can be supplied.

The thread is covered with a hygienic sleeve, which also functions as a counter nut. All the movable parts are hygienically sealed.

Lowered cleaning effort is obtained by the design of the self-draining surfaces.

Additionally, the foot is hygienically sealed to the floor by vulcanized FDA-approved, anti-vibration, anti-slip rubber, which blocks out bacteria underneath the footplate.

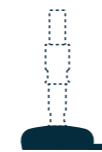


# HYGIENIC LEVELLING FEET M US FIXING



PRODUCT CODE	FOOT - SPINDLE - SLEEVE
EXAMPLE	M076-M US16182-RH01655

## FOOT PLATE



TYPE	DIAMETER Ø [mm]	HEIGHT B [mm]	HOLE POSITION E [mm]	HOLE DIAMETER D1 [mm]	NOM LOAD COMPRESSION [N]	ITEM CODE
76	75	24	53	15	12.000	M076
106	100	34	67	15	14.000	M106

## SPINDLE



THREAD	HEIGHT A [mm]	MIN HEIGHT L [mm]	W1 [mm]	NOM LOAD COMPRESSION [N]	ITEM CODE
M16	166	78	13	30.800	M US16182
M16	216	110	13	22.700	M US16232
M20	166	78	15	48.200	M US20182
M20	216	110	15	48.200	M US20232
M24	166	78	19	69.200	M US24182
M24	216	110	19	69.200	M US24232
M30	166	78	24	110.200	M US30182
M30	216	110	24	110.200	M US30232
M36	166	78	30	160.200	M US36182
M36	216	110	30	160.200	M US36232

## SLEEVE



THREAD	W2 [mm]	DIAMETER Ø2 [mm]	HEIGHT A2 [mm]	ADJUSTMENT C [mm]	ITEM CODE
M16	19	24,5	55	40	RH01655
M16	19	24,5	85	70	RH01685
M20	24	29,9	55	40	RH02055
M20	24	29,9	85	70	RH02085
M24	27	33,0	55	40	RH02455
M24	27	33,0	85	70	RH02485
M30	36	39,5	55	36	RH03055
M30	36	39,5	85	66	RH03085
M36	46	49,5	55	36	RH03655
M36	46	49,5	85	66	RH03685



Total height = A + B  
 Minimum usable height = B + L  
 Maximum usable height = B + L + C  
 Maximum nominal load = Lowest value for footplate or spindle  
 Tolerance of total height = +/- 1,5 mm



# HYGIENIC LEVELLING FEET M US 2 FIXING

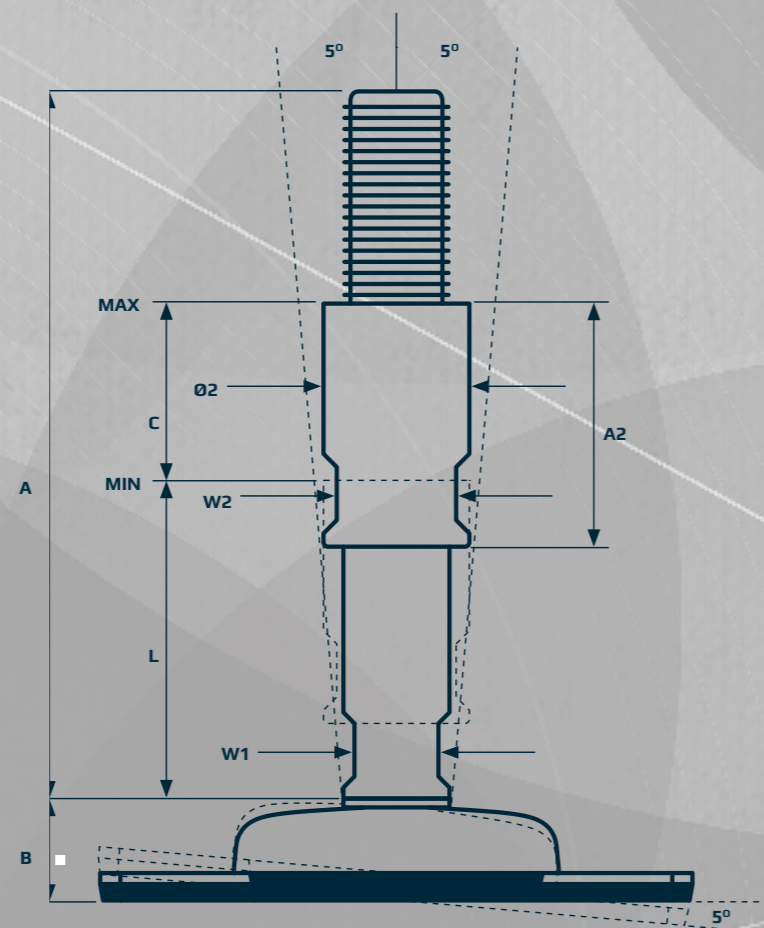
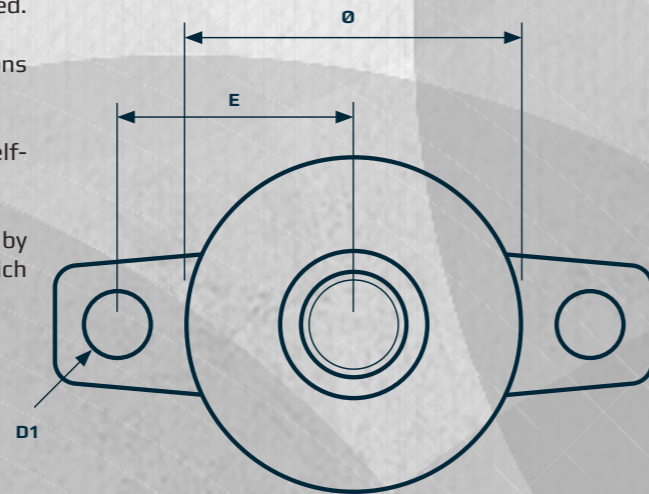
The design and patent protected M US Double Fixing levelling foot is the acceptable choice for machinery and equipment that has to comply with hygienic requirements.

The M US Double Fixing is designed to be fastened to the floor by the two fixing plates. Bolts, nuts and washers can be supplied.

The thread is covered with a hygienic sleeve, which also functions as a counter nut. All the movable parts are hygienically sealed.

Lowered cleaning effort is obtained by the design of the self-draining surfaces.

Additionally, the foot is hygienically sealed to the floor by vulcanized FDA-approved, anti-vibration, anti-slip rubber, which blocks out bacteria underneath the footplate.



# HYGIENIC LEVELLING FEET M US 2 FIXING



PRODUCT CODE	FOOT - SPINDLE - SLEEVE
EXAMPLE	M077-M US16182-RH01655

## FOOT PLATE



TYPE	DIAMETER Ø [mm]	HEIGHT B [mm]	HOLE POSITION E [mm]	HOLE DIAMETER D1 [mm]	NOM LOAD COMPRESSION [N]	ITEM CODE
77	75	24	53	15	12.000	M077

## SPINDLE



THREAD	HEIGHT A [mm]	MIN HEIGHT L [mm]	W1 [mm]	NOM LOAD COMPRESSION [N]	ITEM CODE
M16	166	78	13	30.800	M US16182
M16	216	110	13	22.700	M US16232
M20	166	78	15	48.200	M US20182
M20	216	110	15	48.200	M US20232
M24	166	78	19	69.200	M US24182
M24	216	110	19	69.200	M US24232
M30	166	78	24	110.200	M US30182
M30	216	110	24	110.200	M US30232
M36	166	78	30	160.200	M US36182
M36	216	110	30	160.200	M US36232

## SLEEVE



THREAD	W2 [mm]	DIAMETER Ø2 [mm]	HEIGHT A2 [mm]	ADJUSTMENT C [mm]	ITEM CODE
M16	19	24,5	55	40	RH01655
M16	19	24,5	85	70	RH01685
M20	24	29,9	55	40	RH02055
M20	24	29,9	85	70	RH02085
M24	27	33,0	55	40	RH02455
M24	27	33,0	85	70	RH02485
M30	36	39,5	55	36	RH03055
M30	36	39,5	85	66	RH03085
M36	46	49,5	55	36	RH03655
M36	46	49,5	85	66	RH03685

Total height  
Minimum usable height  
Maximum usable height  
Maximum nominal load  
Tolerance of total height

= A + B  
= B + L  
= B + L + C  
= Lowest value for footplate or spindle  
= +/- 1,5 mm



## DECLARATION OF CONFORMITY HYGIENIC LEVELLING FEET



NGI fundamentally adheres to all applicable directives and standards. All information is based on the current state of knowledge and is subject to change. We attentively follow the revisions and amendments to these directives and will design our products accordingly. This ensures that products from NGI are always in compliance with currently valid requirements.

Our product category is not covered by the scope of application of the EC directive for machinery. For this reason, they cannot be furnished with the CE marking in accordance with the EC directive for machinery.

Furthermore, we declare that the listed materials applied in our products comply with the demands for materials used within the food and pharmaceutical industries.



## DECLARATION OF CONFORMITY HYGIENIC LEVELLING FEET

### The declaration of materials concerns the following Applications

#### Application:

Material type:

Compliance:

#### Steel components, e.g. spindle, sleeve and cover for foot

Stainless steel, AISI 304/A2 (X5CrNi18-10), Euro norm 1.4301.

By request: Stainless steel, AISI 316/A4 (X 5 CrNiMo 17 12 2), Euronorm 1.4401

EN 10204 Type 2.2. NGI A/S states that the product is in compliance with the order with indication of results of nonspecific inspection.

NGI has got EN 10204 type 3.1 inspection certificates on all material used in the products but not specified for each foot.

In the directive 94/9/EC, Equipment for potentially explosive atmospheres, also known as the ATEX directive, equipment without its own potential source of ignition are not covered, nor shall be marked according to the directive. However, NGI levelling feet are suitable for use in all ATEX zones.

#### Application:

Material type:

Color:

Hardness:

Range of temperature:

Compliance:

REACH:

#### Foot base for NGI A/S's hygienic machine feet

NBR (NNF-75)

Black

72 ± 3 Shore A DIN 53 505

Min -35°C to Max +110°C

In accordance with regulations EC 1907/2006.

Candidate List of Substances of very High Concern (16.06.2014).

Substances listed in Annex XIV (14.08.2014).

Substances listed in Annex XVII (08.05.2014).

In accordance with the Directive 2002/95/EC OF EUROPEAN PARLIAMENT AND OF THE COUNCIL OF 27 JANUARY.

Does not contain any substances originating from humans or animals.

Does not contain bisphenols as described in 1895/2005/EEC. Nor BPA, BADGA, BFDGE or NOGE.

ODS:

Does not contain ozone depleting substances. In accordance with the Regulation EC 1005/2009 OF EUROPEAN PARLIAMENT AND OF THE COUNCIL OF 16 SEPTEMBER 2009 and Regulation EC 2037/2000 OF EUROPEAN PARLIAMENT AND OF THE COUNCIL OF 29 JUNE 2000.

In accordance with US Law: "Dodd Frank Wall Street Reform & Consumer Protection Act", sec. 1502, of 21.07.2010.

Conflict Materials:

GMP:

Hazardous Materials :

Good manufacturing process in accordance with 2023/2006 EC.

Does not contain any hazardous substances as described in the Hong Kong International Convention for the Safe and Environmental Sound Recycling of ships, 2009.

Phthalates:

Does not contain phthalates.

FDA:

Guideline 21 CFR 177.2600

#### Application:

Material type:

Electrically:

Chemical resistance:

Color:

Hardness:

Range of temperature:

Load:

#### Application:

Material type:

Hardness:

Color:

Range of temperature:

Storage:

Compliance:

#### Anti slip

NBR By request EPDM

Non-conductive

High to commonly applied cleaning agents

Black

Shore A 80 ± 5

Min -20 °C to Max 110 °C

Low load capacity

#### Sealing ring between steel components for NGI's machine feet.

Silicon rubber

60 Shore A

RAL 5010 (blue)

Min -60°C to Max +200°C

According to ISO 2230

FDA: Guideline 21 CFR 177.2600

RoHS 2: In accordance with the Directive 2011/65/EC OF EUROPEAN PARLIAMENT AND OF THE COUNCIL.

GMP: Good manufacturing process in accordance with 2023/2006 EC.