

# FULLY-THREADED PLASTIC LEVELLING FEET

THE OPTIMAL **FULLY-THREADED PLASTIC** CHOICE  
FOR LOW- AND MIDDLE WEIGHT MACHINERY AND EQUIPMENT  
IN **DIVERSE PRODUCTION** ENVIRONMENTS

THEY OFFER **VALUE-FOR-MONEY**  
AND ARE AVAILABLE IN **NUMEROUS VARIETIES** AND **FUNCTIONS**



# FULLY-THREADED PLASTIC LEVELLING FEET

The product group of plastic fully-threaded levelling feet is the optimal choice for low- and middle weight machinery and equipment in diverse production environments. Because of the wide variety and functionality these fully-threaded levelling feet offer great value-for-money and for the majority of the models a hygienic-oriented design because of the self-draining surfaces.

The reliability of the plastic fully-threaded levelling feet has been appreciated by customers world-wide for more than 25 years and the current product portfolio is a result of a continuous innovative approach and market feedback.

## Product Group Features

- Wide variety in footplate design and functionality
- Unlimited customized height variations
- Optional fastening to the floor with sealed fixing holes
- Several different variations (weight load, height-adjustment, flexible mounting parts)
- Fully-threaded plastic levelling feet with self-draining surfaces and limited cleaning effort
- Optional anti-vibration and anti-slip rubber
- Spindle in stainless steel AISI 304/A2, 1.4301. Optional AISI 316/A4, 1.4401
- Footplate in reinforced polyamide
- Bolts, nuts, washers, welding plates and plastic bushings can be supplied



## HP

### Special Features

- Weight load up to 22.000 N
- Admits up to 10° slope on floors and equipment
- Hygienic-oriented design due to self-draining surfaces
- Possible fastening to the floor under the watertight plastic cap

194



## HPA SERIES

### Special Features

- Weight load up to 45.000 N
- Admits up to 10° slope on floors and equipment
- Hygienic-oriented design due to self-draining surfaces
- Optional fastening to the floor under the watertight plastic cap
- Optional anti-slip rubber under footplate

200



## HPG AS

### Special Features

- Weight load up to 22.000 N
- Admits up to 10° slope on floors and equipment
- Hygienic-oriented design due to self-draining surfaces
- Embedded anti-slip rubber under footplate
- Possible fastening to the floor under the watertight plastic cap

196



## DECLARATION OF CONFORMITY

This declaration of conformity lists all the directives and standards that NGI adheres to. This ensures that products from NGI are always in compliance with currently valid requirements.

206



## HPR AS

### Special Features

- Weight load up to 22.000 N
- Admits up to 10° slope on floors and equipment
- Hygienic-oriented design due to self-draining surfaces
- Embedded anti-slip rubber under footplate
- Possible fastening to the floor under the watertight stainless steel cap

198

## ACCESSORIES

# FULLY-THREADED PLASTIC LEVELLING FEET

NGI is able to deliver all necessary accessories, which ensures a quick and easy installation of the levelling foot. In addition to supplying standardized accessories we are also able to supply customized accessories.

**VISIT OUR WEBSITE  
TO LEARN MORE**

[WWW.NGI-GLOBAL.COM/PRODUCTS/  
LEVELLING-FEET/PLASTIC-FULLY-THREADED](http://WWW.NGI-GLOBAL.COM/PRODUCTS/LEVELLING-FEET/PLASTIC-FULLY-THREADED)



### NUTS & WASHERS

- Stainless steel AISI 304/A2, 1.4301
- Standard nuts (DIN 934)
- Standard counter nuts (DIN 439)
- Standard flat washers (DIN 125)
- Standard fender washers (DIN 9010)
- All dimensions available

304



### WELDING PLATES

- Stainless steel AISI 304/A2, 1.4301
- Squared welding plates
- Round welding plates
- All dimensions available

308



### PLASTIC BUSHINGS

- Squared plastic bushings
- Round plastic bushings
- Many dimensions available

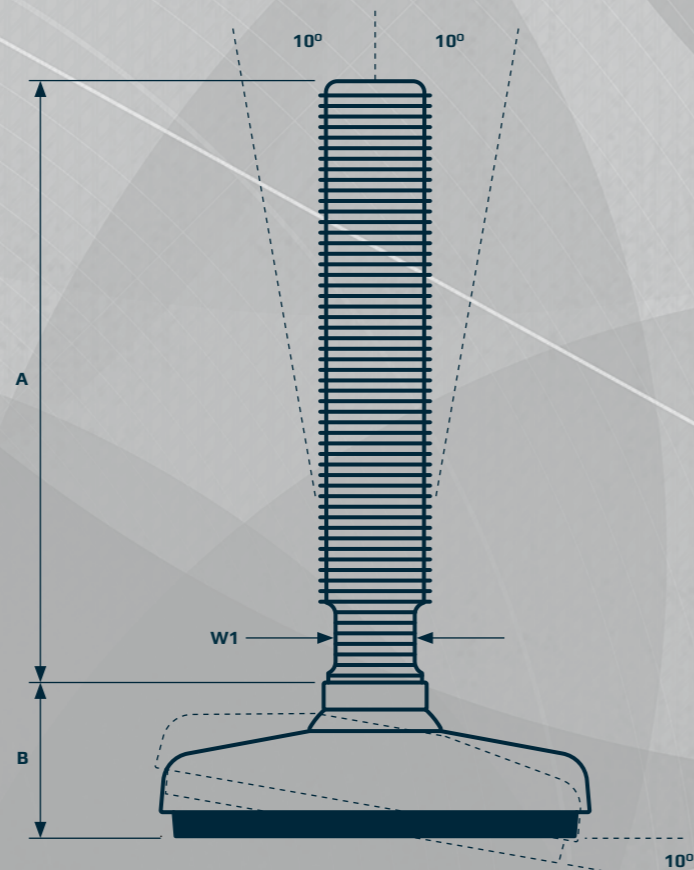
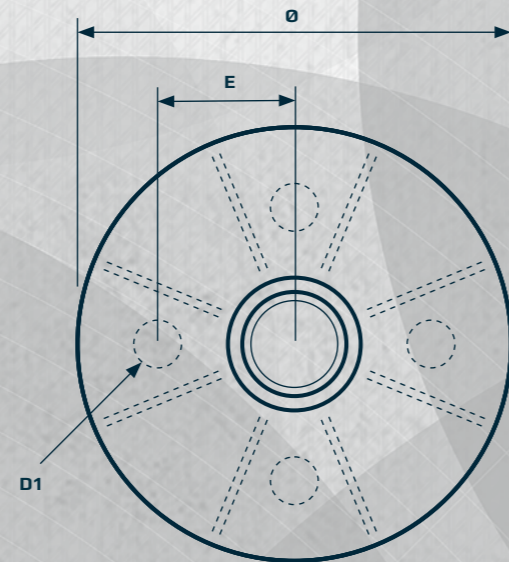
310



# FULLY-THREADED PLASTIC HP

The HP plastic fully-threaded levelling foot is the optimal choice for low- and middle weight machinery and equipment in diverse production environments.

It is possible to fasten the levelling foot to the floor by the two pre-drilled fixing holes located under the watertight plastic cap lowering the cleaning effort. Bolts, nuts and washers can be supplied.



## PLASTIC FULLY-THREADED LEVELLING FEET HP



PRODUCT CODE      FOOT - THREAD - SPINDLE TYPE

EXAMPLE      HP060 - 12 - 70

### FOOT PLATE



TYPE	DIAMETER Ø [mm]	HEIGHT B [mm]	HOLE POSITION E [mm]	HOLE DIAMETER D1 [mm]	NOM LOAD COMPRESSION [N]	ITEM CODE
*60	60	31	-	-	15.000	HP060
80	80	31	27	9	15.000	HP080
100	100	37	32	11	20.000	HP100
120	120	37	40	11	22.000	HP120

### SPINDLE



TYPE ▶	70	100	150	180	230	310	W1 [mm]
THREAD	[N]	[N]	[N]	[N]	[N]	[N]	
M12	17.000	17.000	8.000	5.000	3.000	-	10
M16	32.000	32.000	29.000	20.000	12.500	7.500	13
M20	49.000	49.000	49.000	48.000	30.000	15.000	17
M24	70.000	70.000	70.000	70.000	65.000	35.000	19
** M30	112.500	112.500	112.500	112.500	112.500	95.000	24
HEIGHT A [mm] ▶	73	98	140	173	223	305	



Total height = A + B  
Maximum nominal load = Lowest value for footplate or spindle  
Tolerance of height A = +/-1,5 mm

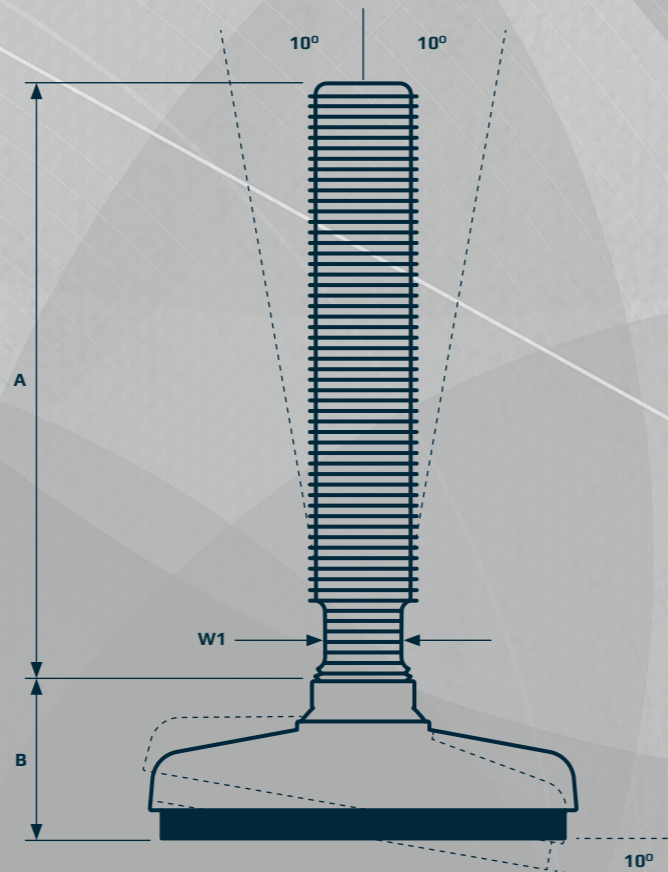
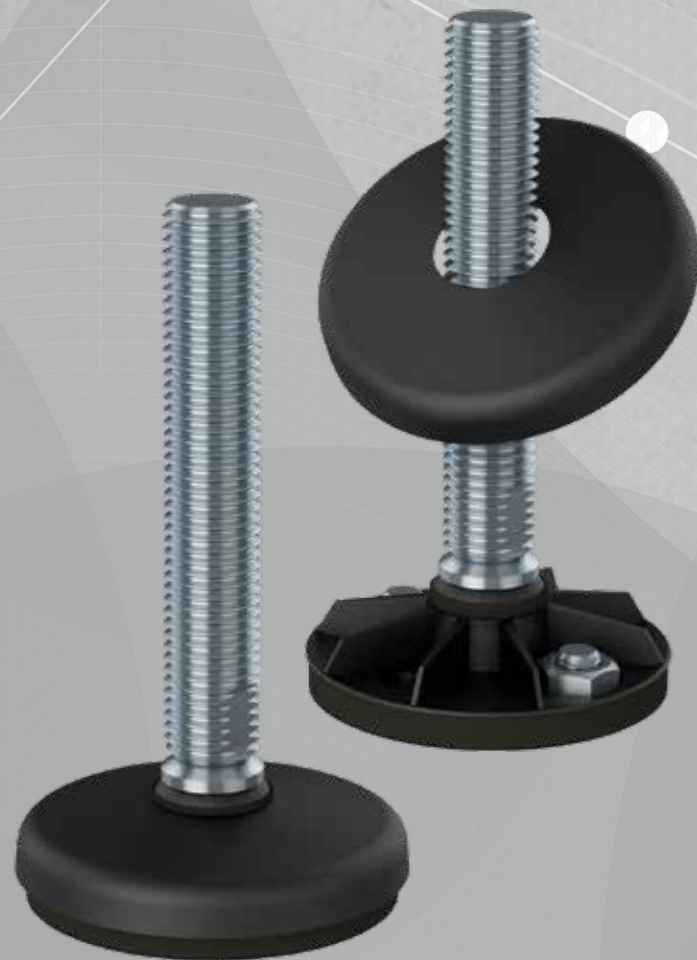
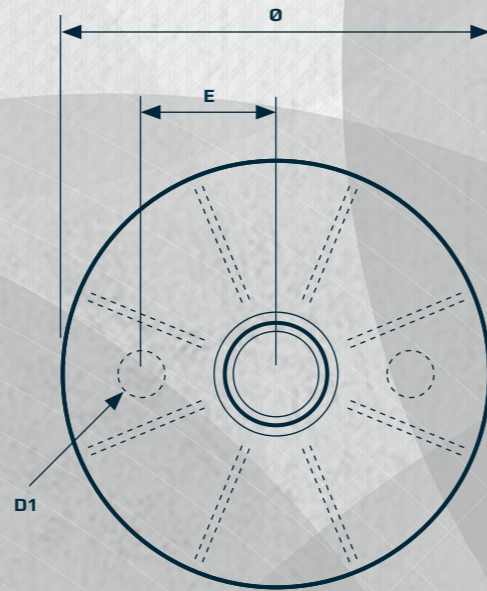
\* Footplate HP060 does not have fixing holes  
\*\* Adjust A +7 mm and B -7 mm if footplate is combined with spindle M30 or M36

# FULLY-THREADED PLASTIC HPG AS

The HPG AS plastic fully-threaded levelling foot is the optimal choice for low- and middle weight machinery and equipment in diverse production environments.

It is possible to fasten the levelling foot to the floor by the two pre-drilled fixing holes located under the watertight plastic cap lowering the cleaning effort. Bolts, nuts and washers can be supplied.

Additionally, the foot is equipped with embedded anti-slip rubber underneath the footplate.



## FULLY-THREADED PLASTIC LEVELLING FEET HPG AS



PRODUCT CODE      FOOT - THREAD - SPINDLE TYPE

EXAMPLE      HPG-AS060- 12- 70

### FOOT PLATE



### SPINDLE

TYPE	DIAMETER Ø [mm]	HEIGHT B [mm]	HOLE POSITION E [mm]	HOLE DIAMETER D1 [mm]	NOM LOAD COMPRESSION [N]	ITEM CODE
*60AS	60	33	-	-	15.000	HPG-AS060
80AS	80	33	26,5	8,5	15.000	HPG-AS080
100AS	100	37	31,5	11,0	20.000	HPG-AS100
120AS	120	38	40,0	11,0	22.000	HPG-AS120

TYPE ▶	70	100	150	180	230	310	W1 [mm]
THREAD	[N]	[N]	[N]	[N]	[N]	[N]	
M12	17.000	17.000	8.000	5.000	3.000	-	10
M16	32.000	32.000	29.000	20.000	12.500	7.500	13
M20	49.000	49.000	49.000	48.000	30.000	15.000	17
M24	70.000	70.000	70.000	70.000	65.000	35.000	19
** M30	112.500	112.500	112.500	112.500	112.500	95.000	24
HEIGHT ▶ A [mm]	73	98	140	173	223	305	



Total height = A + B  
 Maximum nominal load = Lowest value for footplate or spindle  
 Tolerance of height A = +/- 1,5 mm  
 AS = Anti-Slip

\* Footplate HPG-AS060 does not have fixing holes  
 \*\* Adjust A +7 mm and B -7 mm if footplate is combined with spindle M30 or M36

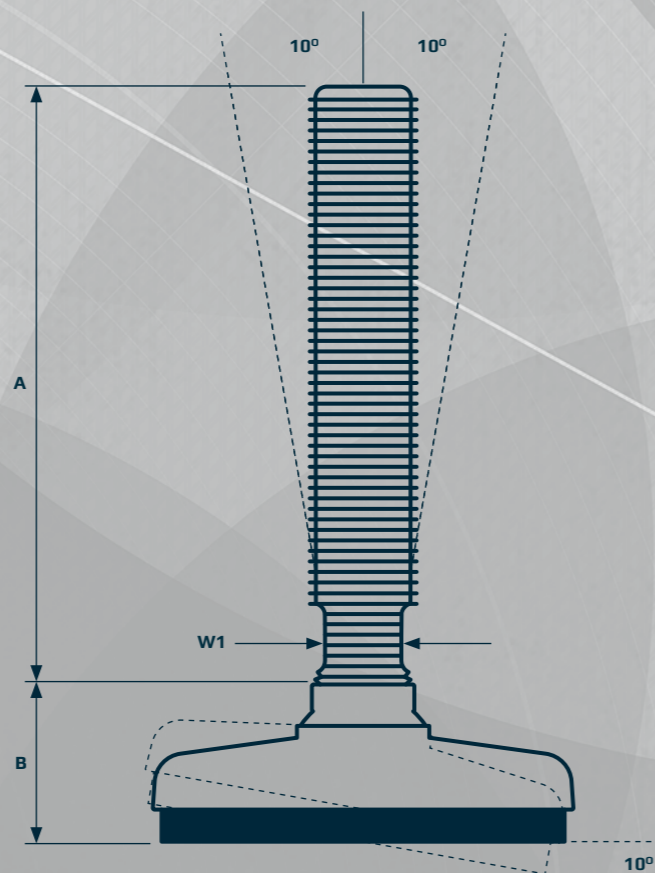
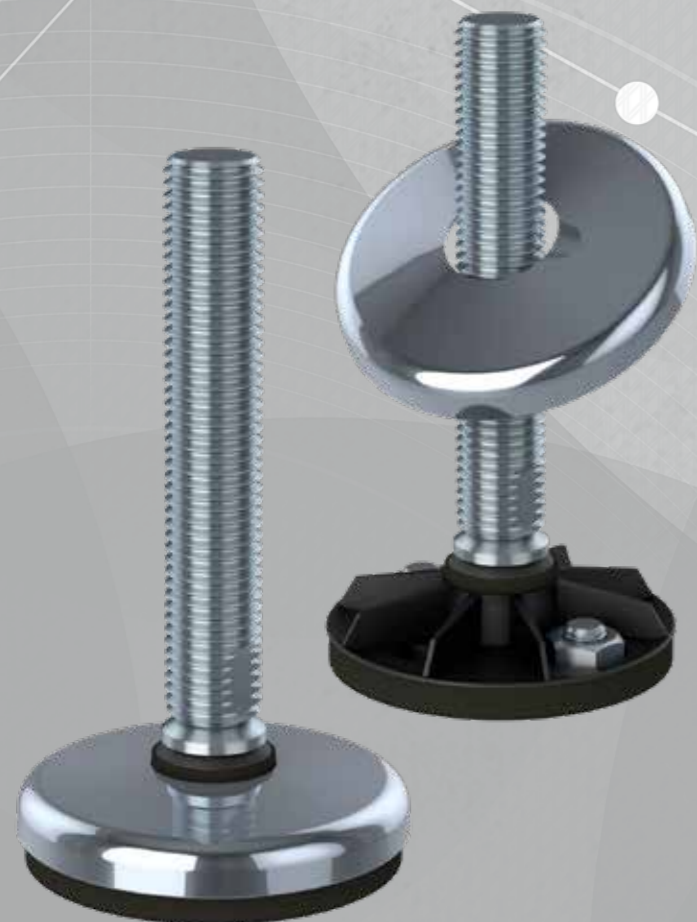
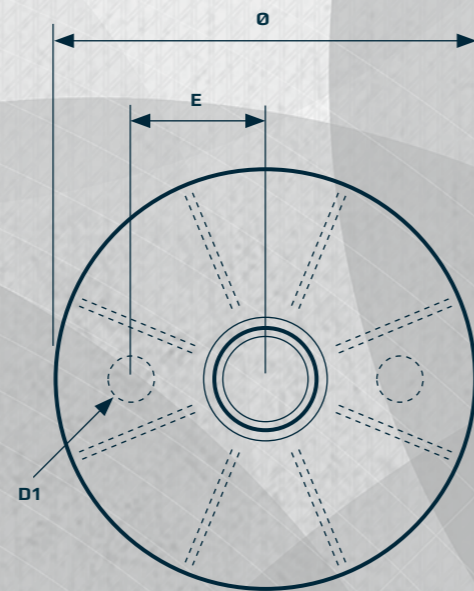


# FULLY-THREADED PLASTIC HPR AS

The HPR AS plastic fully-threaded levelling foot is the optimal choice for low- and middle weight machinery and equipment in diverse production environments.

It is possible to fasten the levelling foot to the floor by the two pre-drilled fixing holes located under the watertight stainless steel cap lowering the cleaning effort. Bolts, nuts and washers can be supplied.

Additionally, the foot is equipped with embedded anti-slip rubber underneath the footplate.



## FULLY-THREADED PLASTIC LEVELLING FEET HPR AS



### FOOT PLATE



### SPINDLE



PRODUCT CODE	FOOT - THREAD - SPINDLE TYPE
EXAMPLE	HPR-AS080 - 12 - 70

TYPE	DIAMETER Ø [mm]	HEIGHT B [mm]	HOLE POSITION E [mm]	HOLE DIAMETER Ø1 [mm]	NOM LOAD COMPRESSION [N]	ITEM CODE
80AS	80	33	26,5	8,5	15.000	HPR-AS080
100AS	100	37	31,5	11,0	20.000	HPR-AS100
120AS	120	38	40,0	11,0	22.000	HPR-AS120

TYPE ▶	70	100	150	180	230	310	W1 [mm]
THREAD	[N]	[N]	[N]	[N]	[N]	[N]	
M12	17.000	17.000	8.000	5.000	3.000	-	10
M16	32.000	32.000	29.000	20.000	12.500	7.500	13
M20	49.000	49.000	49.000	48.000	30.000	15.000	17
M24	70.000	70.000	70.000	70.000	65.000	35.000	19
* M30	112.500	112.500	112.500	112.500	112.500	95.000	24
HEIGHT A [mm]	73	98	140	173	223	305	



Total height = A + B  
 Maximum nominal load = Lowest value for footplate or spindle  
 Tolerance of height A = +/-1,5 mm  
 AS = Anti-Slip

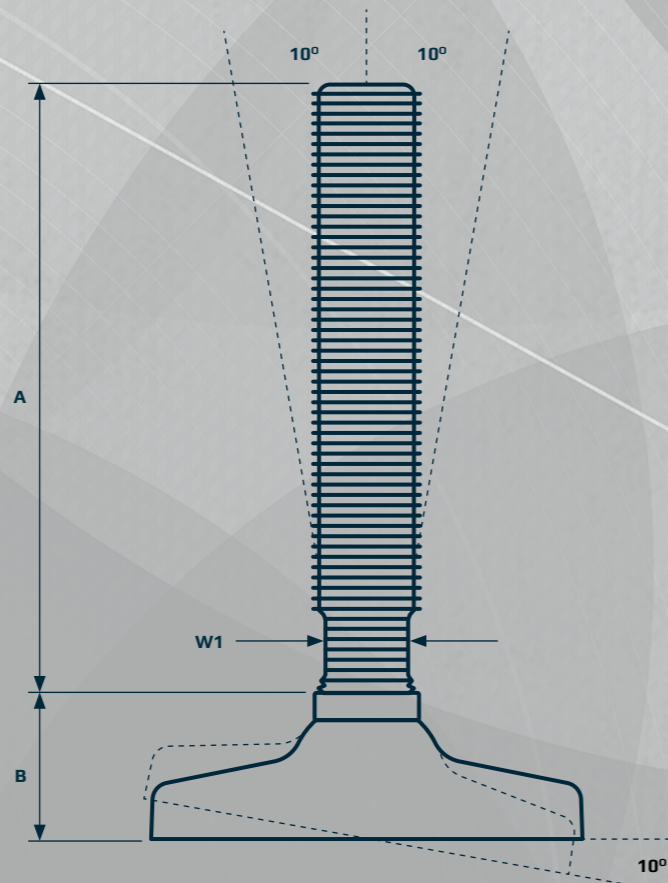
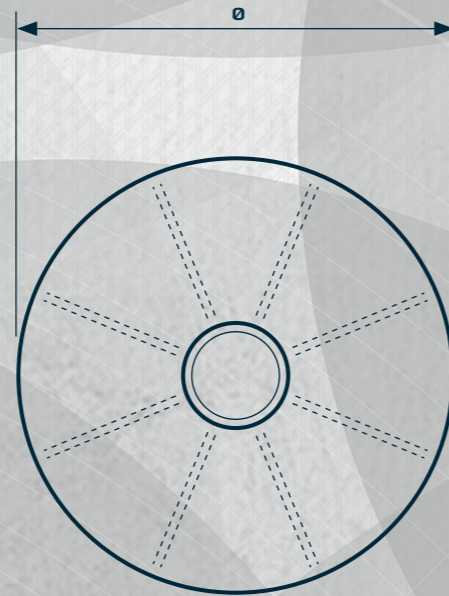
\* Adjust A +7 mm and B -7 mm if footplate is combined with spindle M30 or M36

# FULLY-THREADED PLASTIC HPA / HPA AS

The HPA and HPA AS plastic fully-threaded levelling foot is the optimal choice for low- and middle weight machinery and equipment in diverse production environments.

Lowered cleaning effort is obtained by the design of the self-draining surfaces.

Additionally, the HPA AS is equipped with embedded anti-slip rubber underneath the footplate.



## FULLY-THREADED PLASTIC LEVELLING FEET HPA / HPA AS



PRODUCT CODE      FOOT - THREAD - SPINDLE TYPE

EXAMPLE      HPA040 - 10 - 70

### FOOT PLATE



TYPE	DIAMETER Ø [mm]	HEIGHT B [mm]	NOM LOAD COMPRESSION [N]	ITEM CODE
40	40	28	8.000	HPA040
40AS	40	28	8.000	HPA-AS040
50	50	31	9.000	HPA050
50AS	50	31	9.000	HPA-AS050
60	60	31	15.000	HPA060
60AS	60	33	15.000	HPA-AS060
80	80	31	10.000	HPA080
80AS	80	31	10.000	HPA-AS080
100	100	34	15.000	HPA100
100AS	100	34	15.000	HPA-AS100

### SPINDLE



TYPE ▶	70	100	150	180	230	310	W1 [mm]
THREAD	[N]	[N]	[N]	[N]	[N]	[N]	
* M10	3.500	3.500	3.500	2.000	1.700	-	13
M12	17.000	17.000	8.000	5.000	3.000	-	10
M16	32.000	32.000	29.000	20.000	12.500	7.500	13
M20	49.000	49.000	49.000	48.000	30.000	15.000	17
M24	70.000	70.000	70.000	70.000	65.000	35.000	19
** M30	112.500	112.500	112.500	112.500	112.500	95.000	24
HEIGHT A [mm] ▶	73	98	140	173	223	305	



Total height = A + B  
 Maximum nominal load = Lowest value for footplate or spindle  
 Tolerance of height A = +/- 1,5 mm  
 AS = Anti-Slip

\* M10 spindle only supplied for footplate HPA-AS040 and HPA-AS050  
 \*\* M30 spindle only supplied for footplate HPA-AS080 and HPA-AS100  
 \*\* Adjust A +7 mm and B -7 mm if footplate is combined with spindle M30

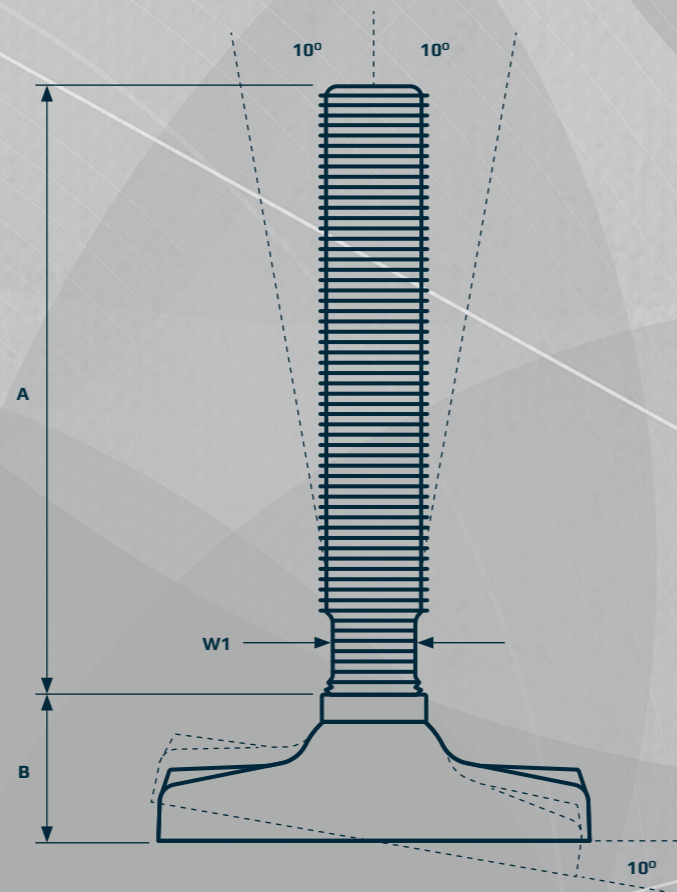
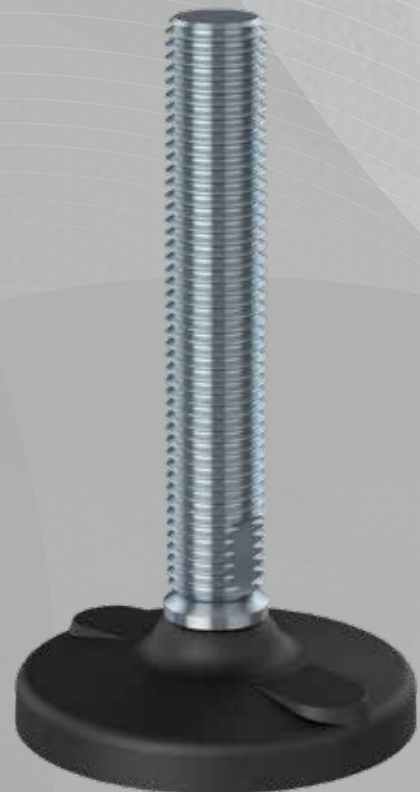
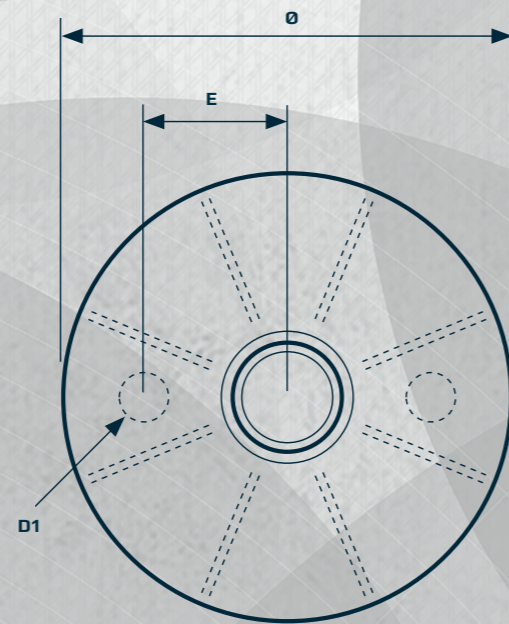
# FULLY-THREADED PLASTIC HPA FIXING / HPA AS FIXING

The HPA Fixing and HPA AS Fixing plastic fully-threaded levelling foot is the optimal choice for low- and middle weight machinery and equipment in diverse production environments.

Lowered cleaning effort is obtained by the design of the self-draining surfaces.

It is possible to fasten the levelling foot to the floor by the two pre-pressed fixing holes, which are easily pressed out using a screwdriver. Bolts, nuts and washers can be supplied.

Additionally, the HPA AS Fixing is equipped with embedded anti-slip rubber underneath the footplate.



## FULLY-THREADED PLASTIC LEVELLING FEET HPA FIXING / HPA AS FIXING



### FOOT PLATE



### SPINDLE



PRODUCT CODE	FOOT - THREAD - SPINDLE TYPE
EXAMPLE	HPA-FIX081 - 12 - 70

TYPE	DIAMETER Ø [mm]	HEIGHT B [mm]	HOLE POSITION E [mm]	HOLE DIAMETER D1 [mm]	NOM LOAD COMPRESSION [N]	ITEM CODE
81	80	31	28	10	10.000	HPA-FIX081
81AS	80	31	28	10	10.000	HPA-FIXAS081
101	100	34	37	12	15.000	HPA-FIX101
101AS	100	34	37	12	15.000	HPA-FIXAS101

TYPE ▶	70	100	150	180	230	310	W1 [mm]
THREAD	[N]	[N]	[N]	[N]	[N]	[N]	
M12	17.000	17.000	8.000	5.000	3.000	-	10
M16	32.000	32.000	29.000	20.000	12.500	7.500	13
M20	49.000	49.000	49.000	48.000	30.000	15.000	17
M24	70.000	70.000	70.000	70.000	65.000	35.000	19
* M30	112.500	112.500	112.500	112.500	112.500	95.000	24
HEIGHT A [mm]	73	98	140	173	223	305	



Total height = A + B  
 Maximum nominal load = Lowest value for footplate or spindle  
 Tolerance of height A = +/- 1,5 mm  
 AS = Anti-Slip

\* Adjust A +6 mm and B -6 mm if footplate is combined with spindle M30





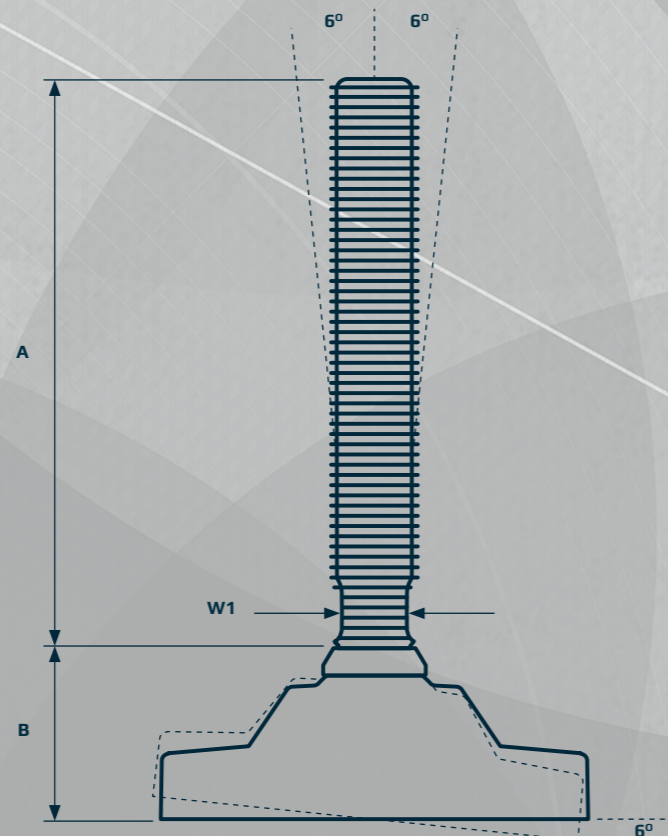
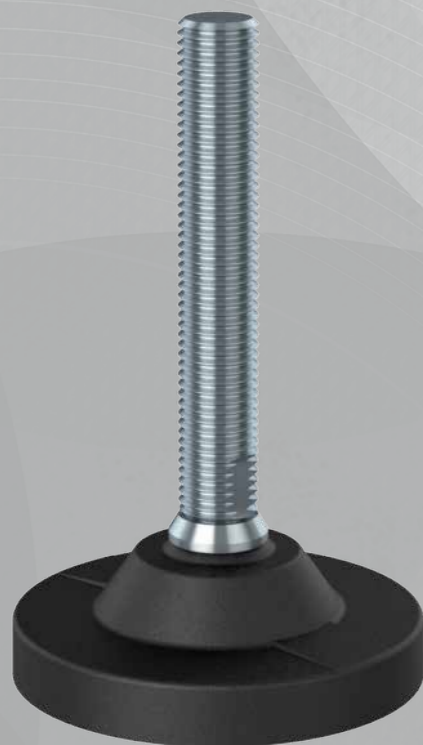
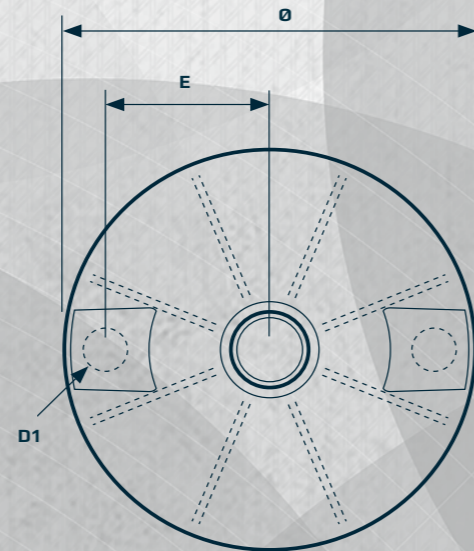
# FULLY-THREADED PLASTIC HPA125 / HPA125 AS

The strong HPA125 and HPA125 AS plastic fully-threaded levelling foot is the optimal choice for heavier machinery and equipment in diverse production environments.

Lowered cleaning effort is obtained by the design of the self-draining surfaces.

It is possible to fasten the levelling foot to the floor by the two pre-pressed fixing holes, which are easily pressed out using a screwdriver. Bolts, nuts and washers can be supplied.

Additionally, the HPA125 AS is equipped with embedded anti-slip rubber underneath the footplate.



## FULLY-THREADED PLASTIC LEVELLING FEET HPA125 / HPA125 AS



PRODUCT CODE **FOOT - THREAD - SPINDLE TYPE**

EXAMPLE HPA125125 - 16 - 100

### FOOT PLATE

TYPE	DIAMETER Ø [mm]	HEIGHT B [mm]	HOLE POSITION E [mm]	HOLE DIAMETER D1 [mm]	NOM LOAD COMPRESSION [N]	ITEM CODE
125	125	50	28	10	45.000	HPA125
125AS	125	51	28	10	45.000	HPA-AS125



### SPINDLE

TYPE ▶	100	150	180	230	310	W1 [mm]
THREAD	[N]	[N]	[N]	[N]	[N]	
M16	32.000	29.000	20.000	12.500	7.500	13
M20	49.000	49.000	48.000	30.000	15.000	17
M24	70.000	70.000	70.000	65.000	35.000	19
* M30	112.500	112.500	112.500	112.500	95.000	24
* M36	162.000	162.000	162.000	162.000	162.000	30
HEIGHT ▶ A [mm]	108	166	180	230	299	



Total height = A + B  
 Maximum nominal load = Lowest value for footplate or spindle  
 Tolerance of height A = +/-1,5 mm  
 AS = Anti-Slip

\* Adjust A +6 mm and B -6 mm if footplate is combined with spindle M30 and M36

## DECLARATION OF CONFORMITY FULLY-THREADED PLASTIC LEVELLING FEET

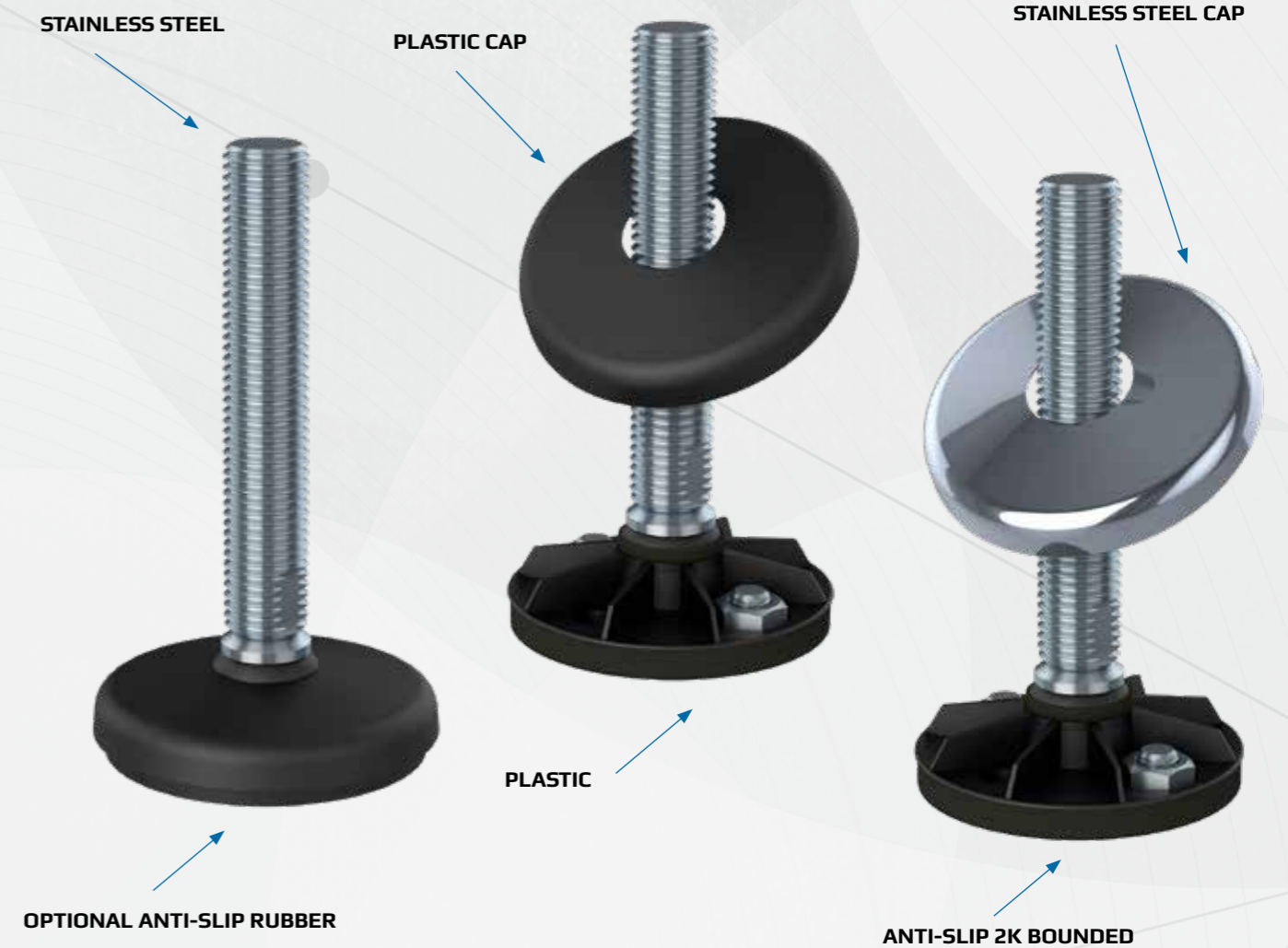
# CE

NGI fundamentally adheres to all applicable directives and standards. All information is based on the current state of knowledge and is subject to change. We attentively follow the revisions and amendments to these directives and will design our products accordingly. This ensures that products from NGI are always in compliance with currently valid requirements.

Our product category is not covered by the scope of application of the EC directive for machinery. For this reason, they cannot be furnished with the CE marking in accordance with the EC directive for machinery.

Furthermore, we declare that the listed materials applied in our products comply with the demands for materials used within the food and pharmaceutical industries.

## DECLARATION OF CONFORMITY FULLY-THREADED PLASTIC LEVELLING FEET



# DECLARATION OF CONFORMITY

## FULLY-THREADED PLASTIC LEVELLING FEET

### The declaration of materials concerns the following Applications

**Application:** Steel components, e.g. spindle and cover for foot  
 Material type: Stainless steel, AISI 304/A2 (X5CrNi18-10), Euronorm 1.4301.  
 By request: Stainless steel, AISI 316/A4 (X 5 CrNiMo 17 12 2), Euronorm 1.4401  
 Compliance: EN 10204 Type 2.2. NGI A/5 states that the product is in compliance with the order with indication of results of nonspecific inspection.  
 NGI has got EN 10204 type 3.1 inspection certificates on all material used in the products but not specified for each foot.  
 In the directive 94/9/EC, Equipment for potentially explosive atmospheres, also known as the ATEX directive, equipment without its own potential source of ignition are not covered, nor shall be marked according to the directive. However, NGI levelling feet are suitable for use in all ATEX zones.

**Application:** Footbase for NGI A/S's machinefeet and cover for foot  
 Material type: PA 6 Miramid FP, reinforced.  
 Electrically: Non-conductive.  
 IP Code IP69K: DIN (Deutsches Institut für Normung) 40050-9: Straßenfahrzeuge; IP-Schutzarten; Schutz gegen Fremdkörper, Wasser und Berühren; Elektrische Ausrüstung [Road vehicles; degrees of protection (IP-code); protection against foreign objects, water and impact; electrical equipment]. May 1993. (an English translation of the German original is available from DIN).  
 Chemical resistance: High to commonly applied cleaning agents.  
 Color: Black  
 Flammability: 94 HB  
 Range of temperature: Min -20°C to Max +110°C  
 Max. temperature High thermal resistance for short duration: +150°C  
 Compliance: REACH: In accordance with regulation EC 1907/2006.  
 Do not contain any substances above 0.1% (w/w) from: The Candidate List of Substances of Very High Concern (16.01.2020). Annex XVII (19-11-2019)  
 RoHS 2 & RoHS 3: In accordance with the Directive 2011/65/EC and 2015/863/EC OF THE EUROPEAN PARLIAMENT AND OF THE COUNCIL.  
 ADI free: Does not contain any substances originating from humans or animals.  
 Bisphenols: Does not contain bisphenols as described in 1895/2005/EEC. Nor BPA, BADGA, BFDGE or NOGE.  
 ODS: Does not contain ozone depleting substances. In accordance with the Regulation EC 1005/2009 OF EUROPEAN PARLIAMENT AND OF THE COUNCIL OF 16 SEPTEMBER 2009 and Regulation EC 2037/2000 OF EUROPEAN PARLIAMENT AND OF THE COUNCIL OF 29 JUNE 2000.  
 Conflict Materials: In accordance with US Law: "Dodd Frank Wall Street Reform & Consumer Protection Act", sec. 1502, of 21.07.2010.  
 GMP: Good manufacturing process in accordance with 2023/2006 EC.  
 Hazardous materials: Do not contain any hazardous substances as described in the Hong Kong International Convention for the Safe and Environmental Sound Recycling of ships, 2009.  
 Phthalates: Does not contain phthalates.

# DECLARATION OF CONFORMITY

## FULLY-THREADED PLASTIC LEVELLING FEET

### The declaration of materials concerns the following Applications

**Application:** Plastic Lid  
 Material type: PPC  
 Electrically: Non-conductive  
 Chemical resistance: High to commonly applied cleaning agents  
 Color: Black  
 Hardness: Rockwell R 85  
 Range of temperature: Min -20 °C to Max 90 °C  
 Load: High load capacity

**Application:** Anti slip  
 Material type: NBR By request EPDM  
 Electrically: Non-conductive  
 Chemical resistance: High to commonly applied cleaning agents  
 Color: Black  
 Hardness: Shore A 80 ± 5  
 Range of temperature: Min -20 °C to Max 110 °C  
 Load: Low load capacity

**Application:** Anti slip 2K Bounded  
 Material type: TPE  
 Electrically: Non-conductive  
 Chemical resistance: High to commonly applied cleaning agents  
 Color: Black  
 Hardness: Shore A 90 ± 5  
 Range of temperature: Min -50°C to Max +125 °C  
 Load: High load capacity

**Application:** Sealing ring between steel components for NGI's machine feet.  
 Material type: Silicon rubber  
 Electrically: Non-conductive  
 Chemical resistance: High to commonly applied cleaning agents  
 Color: RAL 5010 (blue)  
 Hardness: Shore A 60 ± 5  
 Range of temperature: Min -60°C to Max +200 °C  
 Storage: According to ISO 2230  
 Compliance: FDA: Guideline 21 CFR 177.2600  
 RoHS 2: In accordance with the Directive 2011/65/EC OF EUROPEAN PARLIAMENT AND OF THE COUNCIL.  
 GMP: Good manufacturing process in accordance with 2023/2006 EC.