

FULLY-THREADED LEVELLING FEET

THE **OPTIMAL FULLY-THREADED** CHOICE FOR MACHINERY AND
EQUIPMENT IN **DIVERSE PRODUCTION** ENVIRONMENTS

THEY OFFER **VALUE-FOR-MONEY**
AND ARE AVAILABLE IN **NUMEROUS VARIETIES** AND **FUNCTIONS**



FULLY-THREADED LEVELLING FEET

The product group of fully-threaded levelling feet is the optimal choice for machinery and equipment in diverse production environments. Because of the wide variety and functionality these fully-threaded levelling feet offer great value-for-money and for the majority of the models a hygienic-oriented design because of the self-draining surfaces.

The reliability of the fully-threaded levelling feet has been appreciated by customers world-wide for more than 25 years and the current product portfolio is a result of a continuous innovative approach and market feedback.

Product Group Features

- Design and patent protected
- Wide variety in footplate design and functionality
- Unlimited customized height variations
- Several thousand different variations (weight load, height-adjustment, flexible mounting parts)
- Fully-threaded hygienic oriented levelling feet with self-draining surfaces and limited cleaning effort
- Vulcanized FDA-approved, anti-vibration, anti-slip rubber blocks out bacteria underneath the footplate
- Stainless steel AISI 304/A2, 1.4301. Optional AISI 316/A4, 1.4401
- Low-friction washer between spindle and footplate ensures easy adjustment
- Bolts, nuts, washers, welding plates and plastic bushings can be supplied



HX

Special Features

- Weight load up to 70.000 N
- Hygienic-oriented design due to self-draining surfaces
- Admits up to 10° slope on floors and equipment
- Optional fixing to the floor

144



DECLARATION OF CONFORMITY

This declaration of conformity lists all the directives and standards that NGI adheres to. This ensures that products from NGI are always in compliance with currently valid requirements.

156



HXT

Special Features

- Weight load up to 70.000 N
- Hygienic oriented design due to self-draining surfaces
- The footplate and spindle are two separate parts
- Diametrically centered elevation on the footplate
- Admits up to 15° slope on floors and equipment
- Optional fixing to the floor

148



M

Special Features

- Weight load up to 50.000 N
- Footplate diameters minimum 40 mm – maximum 180 mm
- Admits up to 5° slope on floors and equipment
- Optional single or double fixing to the floor

150

ACCESSORIES

FULLY-THREADED

NGI is able to deliver all necessary accessories, which ensures a quick and easy installation of the levelling foot. In addition to supplying standardized accessories we are also able to supply customized accessories.

**VISIT OUR WEBSITE
TO LEARN MORE**
[WWW.NGI-GLOBAL.COM/PRODUCTS/
LEVELLING-FEET/FULLY-THREADED](http://WWW.NGI-GLOBAL.COM/PRODUCTS/LEVELLING-FEET/FULLY-THREADED)



NUTS & WASHERS

- Stainless steel AISI 304/A2, 1.4301
- Standard nuts (DIN 934)
- Standard counter nuts (DIN 439)
- Standard flat washers (DIN 125)
- Standard fender washers (DIN 9010)
- All dimensions available

304



WELDING PLATES

- Stainless steel AISI 304/A2, 1.4301
- Squared welding plates
- Round welding plates
- All dimensions available

308



PLASTIC BUSHINGS

- Squared plastic bushings
- Round plastic bushings
- Many dimensions available

310

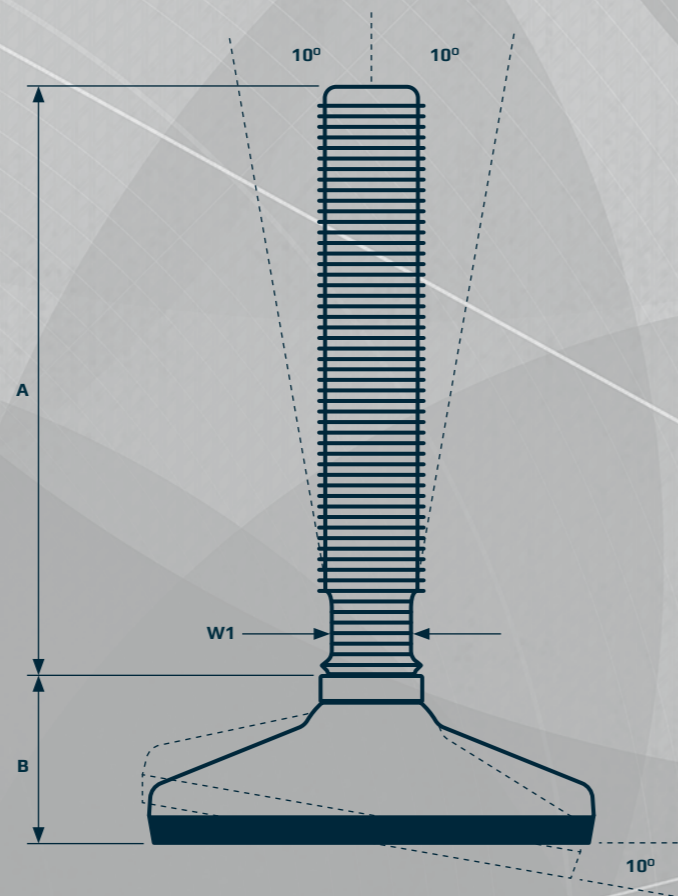
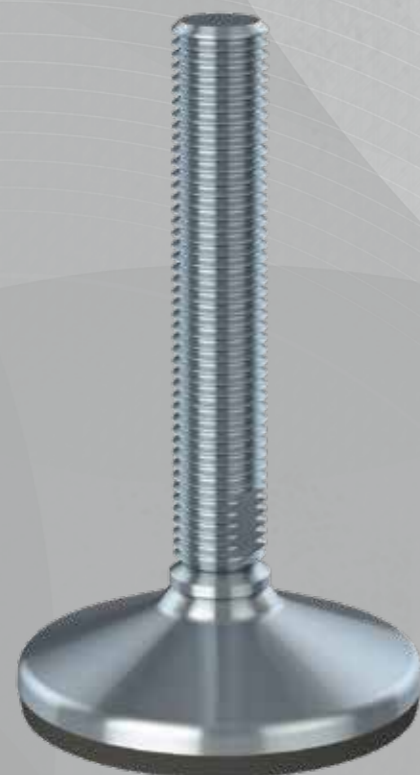
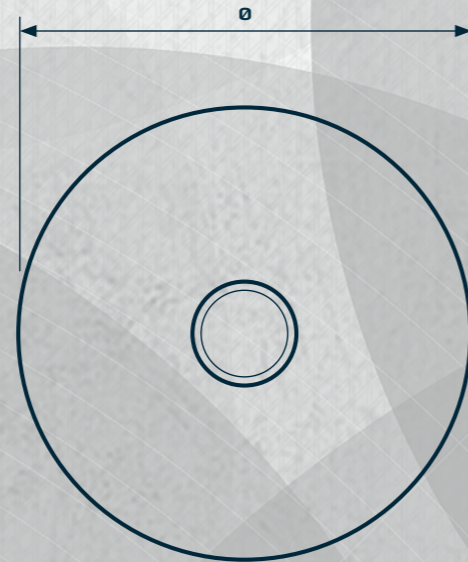


FULLY-THREADED LEVELLING FEET HX

The design and patent protected HX fully-threaded levelling foot is the optimal choice for machinery and equipment in diverse production environments.

Minimum cleaning effort is obtained by the design of the self-draining surfaces.

Additionally, the foot is hygienically sealed to the floor by vulcanized FDA-approved, anti-vibration, anti-slip rubber, which blocks out bacteria underneath the footplate.



FULLY-THREADED LEVELLING FEET HX



PRODUCT CODE FOOT - THREAD - SPINDLE TYPE

EXAMPLE HX065 - 12 - 50

FOOT PLATE



TYPE	DIAMETER \varnothing [mm]	HEIGHT B [mm]	NOM LOAD COMPRESSION [N]	ITEM CODE
65	65	34	9.000	HX065
80	80	39	15.000	HX080
105	105	39	22.000	HX105
125	125	40	32.000	HX125
150	150	42	65.000	HX150

SPINDLE



TYPE ▶	50	70	100	150	180	230	310	W1 [mm]
THREAD	[N]	[N]	[N]	[N]	[N]	[N]	[N]	
M12	17.000	17.000	17.000	8.000	5.000	3.000	-	10
M16	-	32.000	32.000	29.000	20.000	12.500	7.500	13
M20	-	49.000	49.000	49.000	48.000	30.000	15.000	17
M24	-	70.000	70.000	70.000	70.000	65.000	35.000	19
* M30	-	112.500	112.500	112.500	112.500	112.500	95.000	24
* M36	-	162.000	162.000	162.000	162.000	162.000	162.000	30
* M42	-	220.000	220.000	220.000	220.000	220.000	220.000	36
HEIGHT ▶ A [mm]	49	70	97	139	172	223	305	



Total height = A + B
Maximum nominal load = Lowest value for footplate or spindle
Tolerance of height A = +/-1,5 mm

* Adjust A +6 mm and B -6 mm if footplate is combined with spindle M30, M36 or M42



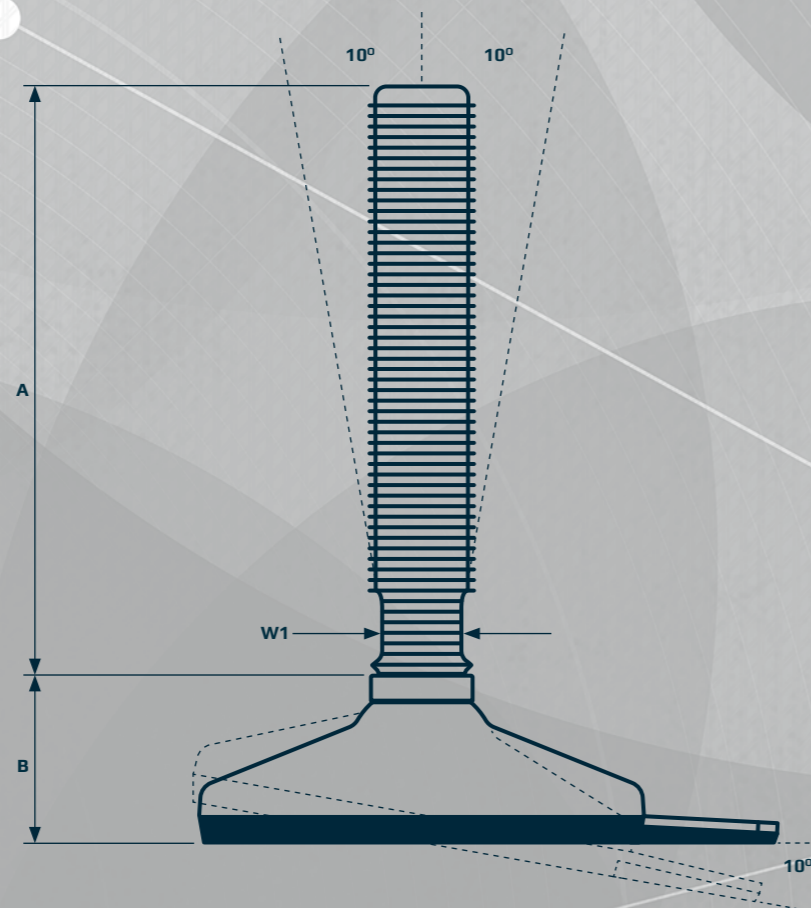
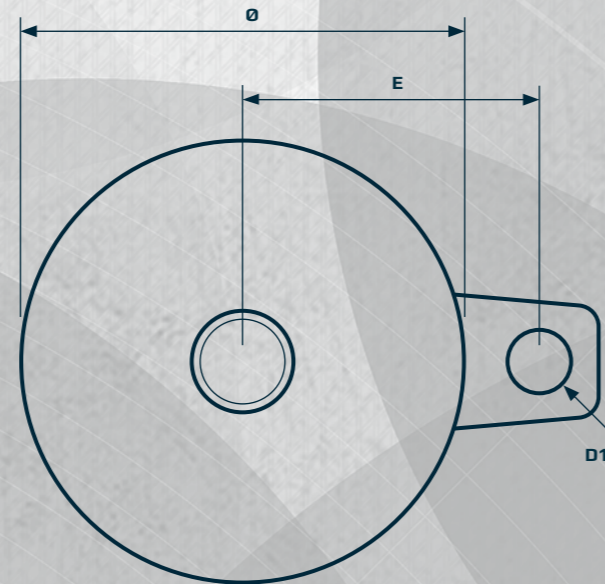
FULLY-THREADED LEVELLING FEET HX FIXING

The design and patent protected HX Fixing fully-threaded levelling foot is the optimal choice for machinery and equipment in diverse production environments.

The HX Fixing is designed to be fastened to the floor by the fixing plate. Bolt, nut and washer can be supplied.

Minimum cleaning effort is obtained by the design of the self-draining surfaces.

Additionally, the foot is hygienically sealed to the floor by vulcanized FDA-approved, anti-vibration, anti-slip rubber, which blocks out bacteria underneath the footplate.



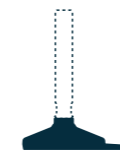
FULLY-THREADED LEVELLING FEET HX FIXING



PRODUCT CODE **FOOT - THREAD - SPINDLE TYPE**

EXAMPLE HX-FIX066 - 12 - 050

FOOT PLATE



TYPE	DIAMETER Ø [mm]	HEIGHT B [mm]	HOLE POSITION E [mm]	HOLE DIAMETER D1 [mm]	NOM LOAD COMPRESSION [N]	ITEM CODE
66	65	34	46,8	15	9.000	HX-FIX066
81	80	39	53,2	15	15.000	HX-FIX081
106	105	39	70,0	15	22.000	HX-FIX106
126	125	40	80,0	15	32.000	HX-FIX126

SPINDLE



TYPE ▶	50	70	100	150	180	230	310	W1 [mm]
THREAD	[N]	[N]	[N]	[N]	[N]	[N]	[N]	
M12	17.000	17.000	17.000	8.000	5.000	3.000	-	10
M16	-	32.000	32.000	29.000	20.000	12.500	7.500	13
M20	-	49.000	49.000	49.000	48.000	30.000	15.000	17
M24	-	70.000	70.000	70.000	70.000	65.000	35.000	19
* M30	-	112.500	112.500	112.500	112.500	112.500	95.000	24
* M36	-	162.000	162.000	162.000	162.000	162.000	162.000	30
* M42	-	220.000	220.000	220.000	220.000	220.000	220.000	36
HEIGHT ▶ A [mm]	49	70	97	139	172	223	305	



Total height = A + B
Maximum nominal load = Lowest value for footplate or spindle
Tolerance of height A = +/-1,5 mm

* Adjust A +6 mm and B -6 mm if footplate is combined with spindle M30, M36 or M42



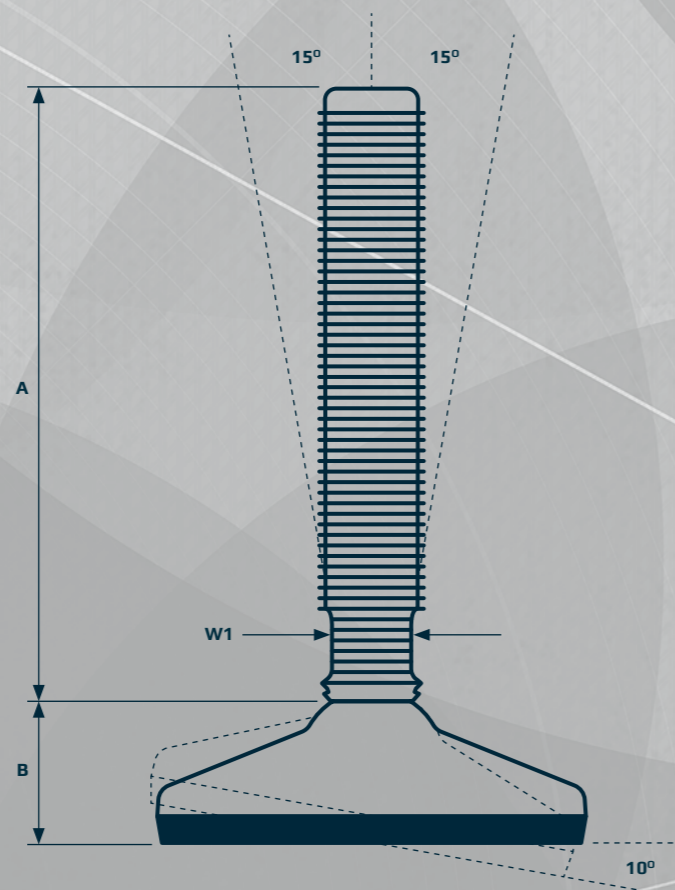
FULLY-THREADED LEVELLING FEET HXT

The design and patent protected HXT fully-threaded levelling foot is the optimal choice for machinery and equipment in diverse production environments.

The HXT consists of a separated footplate and spindle connected by the diametrically centered elevation on the footplate.

Minimum cleaning effort is obtained by the design of the self-draining surfaces.

Additionally, the foot is hygienically sealed to the floor by vulcanized FDA-approved, anti-vibration, anti-slip rubber, which blocks out bacteria underneath the footplate.



FULLY-THREADED LEVELLING FEET HXT



PRODUCT CODE **FOOT - THREAD - SPINDLE TYPE**

EXAMPLE HXT080 - 20 - 150

FOOT PLATE



TYPE	DIAMETER Ø [mm]	HEIGHT B [mm]	NOM LOAD COMPRESSION [N]	ITEM CODE
80	80	34	15.000	HXT080
105	105	35	22.000	HXT105
125	125	35	32.000	HXT125
150	150	37	65.000	HXT150

SPINDLE



TYPE ▶	70	100	150	180	230	310	W1 [mm]
THREAD	[N]	[N]	[N]	[N]	[N]	[N]	
* M24	70.000	70.000	70.000	70.000	65.000	35.000	19
** M30	112.500	112.500	112.500	112.500	112.500	95.000	24
** M36	-	162.000	162.000	162.000	162.000	162.000	30
** M42	-	220.000	220.000	220.000	220.000	220.000	36
HEIGHT ▶ A [mm]	70	100	150	180	230	310	

Total height = A + B
 Maximum nominal load = Lowest value for footplate or spindle
 Tolerance of height A = +/- 1,5 mm



* Adjust A +1 mm and B -1 mm if footplate is combined with spindle M24
 ** Adjust A +2 mm and B -2 mm if footplate is combined with spindle M30, M36 or M42

FULLY-THREADED LEVELLING FEET

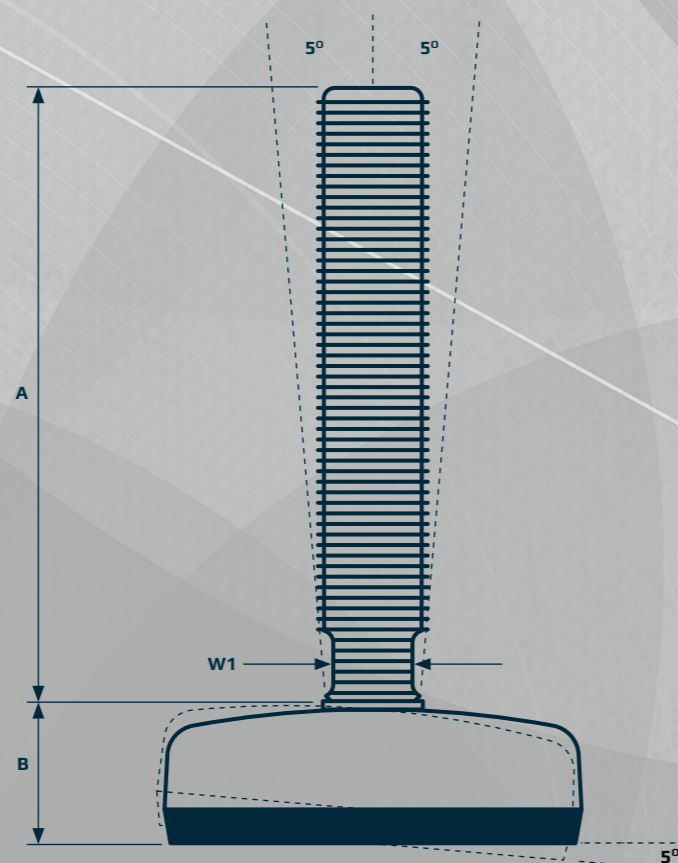
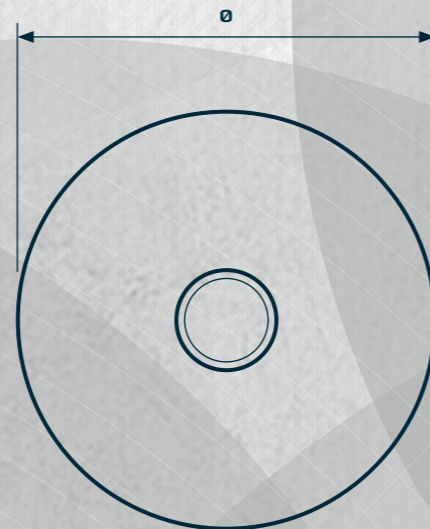
M

The design and patent protected M fully-threaded levelling foot is the optimal choice for machinery and equipment in diverse production environments.

The wide footplate variety makes the Type M Series applicable to all sizes of machinery and equipment.

Lowered cleaning effort is obtained by the design of the self-draining surfaces.

Additionally, the foot is hygienically sealed to the floor by vulcanized FDA-approved, anti-vibration, anti-slip rubber, which blocks out bacteria underneath the footplate.



FULLY-THREADED LEVELLING FEET

M



PRODUCT CODE **FOOT - THREAD - SPINDLE TYPE**

EXAMPLE M040-8-050

FOOT PLATE



TYPE	DIAMETER \varnothing [mm]	HEIGHT B [mm]	NOM LOAD COMPRESSION [N]	ITEM CODE
40	40	22	2.500	M040
50	50	23	4.000	M050
75	75	24	10.000	M075
100	100	34	22.000	M100
105	100	32	12.000	M105
125	125	39	30.000	M125
150	150	42	45.000	M150
180	180	42	50.000	M180

SPINDLE



TYPE ▶	50	70	100	150	180	230	310	W1 [mm]
THREAD	[N]	[N]	[N]	[N]	[N]	[N]	[N]	
* M8	3.500	3.500	3.500	1.700	1.200	700	-	6
** M10	3.500	3.500	3.500	3.500	2.000	1.700	-	9
M12	17.000	17.000	17.000	8.000	5.000	3.000	-	10
M16	-	32.000	32.000	29.000	20.000	12.500	7.500	13
M20	-	49.000	49.000	49.000	48.000	30.000	15.000	17
M24	-	70.000	70.000	70.000	70.000	65.000	35.000	19
*** M30	-	112.500	112.500	112.500	112.500	112.500	95.000	24
*** M36	-	162.000	162.000	162.000	162.000	162.000	162.000	30
*** M42	-	220.000	220.000	220.000	220.000	220.000	220.000	36
HEIGHT ▶ A [mm]	53	72	106	147	180	230	313	

Total height = $A + B$
 Maximum nominal load = Lowest value for footplate or spindle
 Tolerance of height A = $\pm 1,5$ mm



* M8 spindle only supplied for M40 footplate
 ** M10 spindle not supplied for M100 - M180 footplates
 *** M30, M36 and M42 spindle not supplied for M40 and M50 footplates

FULLY-THREADED LEVELLING FEET M FIXING

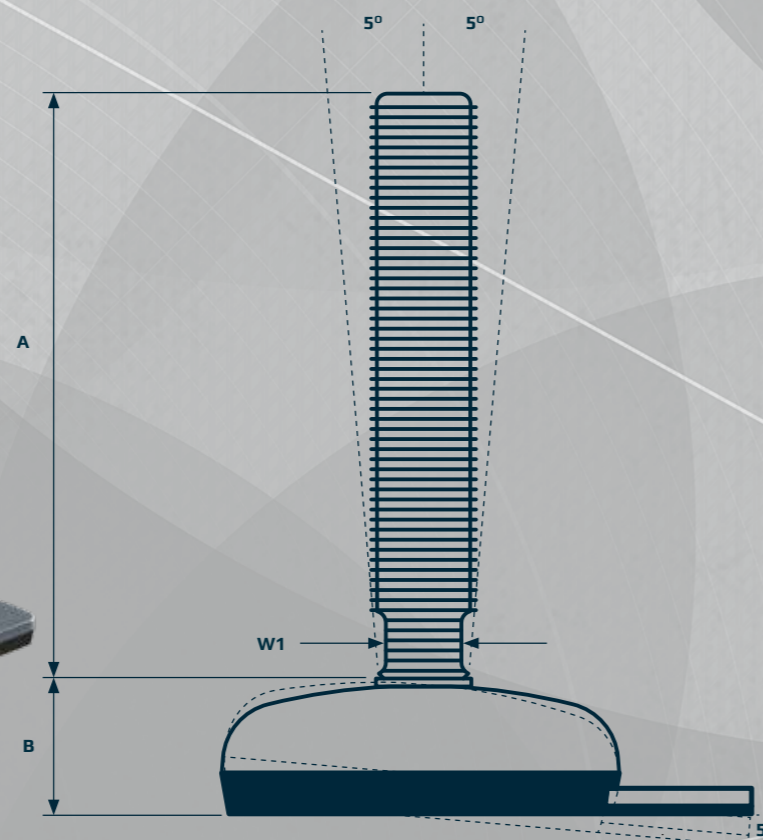
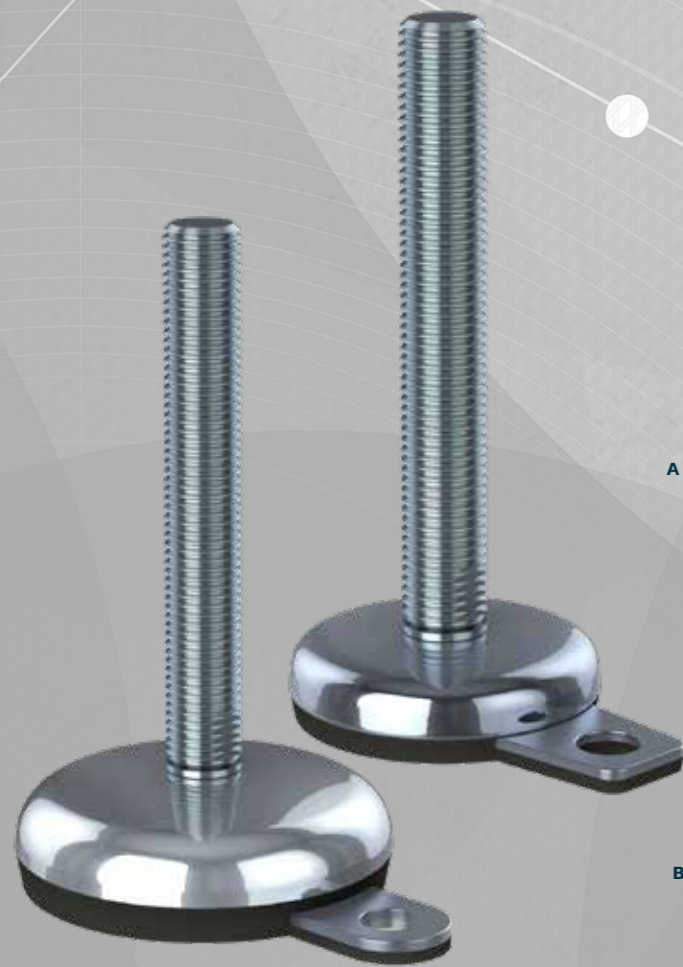
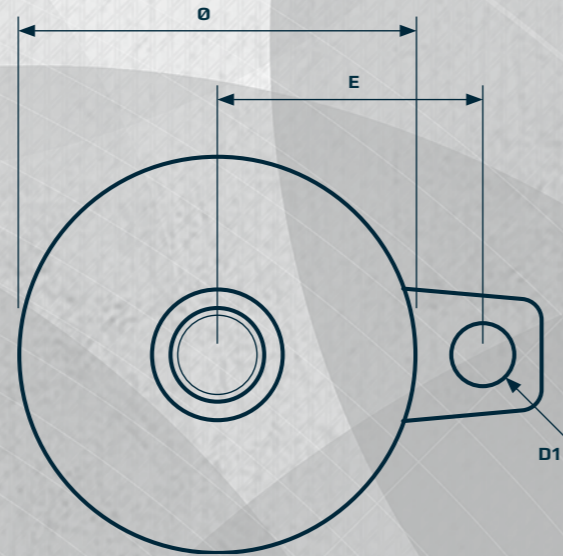
The design and patent protected M Fixing fully-threaded levelling foot is the optimal choice for standardized machinery and equipment in diverse production environments.

The M Fixing is designed to be fastened to the floor by the fixing plate. Bolt, nut and washer can be supplied.

The wide footplate variety makes the Type M Series applicable to all sizes of machinery and equipment.

Lowered cleaning effort is obtained by the design of the self-draining surfaces.

Additionally, the foot is hygienically sealed to the floor by vulcanized FDA-approved, anti-vibration, anti-slip rubber, which blocks out bacteria underneath the footplate.



FULLY-THREADED LEVELLING FEET M FIXING

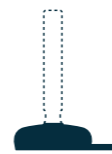


PRODUCT CODE **FOOT - THREAD - SPINDLE TYPE**

EXAMPLE M-FIX076-10-050

FOOT PLATE

TYPE	DIAMETER Ø [mm]	HEIGHT B [mm]	HOLE POSITION E [mm]	HOLE DIAMETER D1 [mm]	NOM LOAD COMPRESSION [N]	ITEM CODE
76	75	24	52	15	12.000	M-FIX076
106	100	34	67	15	14.000	M-FIX106



SPINDLE

TYPE ▶	50	70	100	150	180	230	310	W1 [mm]
THREAD	[N]	[N]	[N]	[N]	[N]	[N]	[N]	
* M10	3.500	3.500	3.500	3.500	2.000	1.700	-	13
M12	17.000	17.000	17.000	8.000	5.000	3.000	-	10
M16	-	32.000	32.000	29.000	20.000	12.500	7.500	13
M20	-	49.000	49.000	49.000	48.000	30.000	15.000	17
M24	-	70.000	70.000	70.000	70.000	65.000	35.000	19
M30	-	112.500	112.500	112.500	112.500	112.500	95.000	24
M36	-	162.000	162.000	162.000	162.000	162.000	162.000	30
M42	-	220.000	220.000	220.000	220.000	220.000	220.000	36
HEIGHT ▶ A [mm]	53	72	106	147	180	230	313	



Total height = A + B
 Maximum nominal load = Lowest value for footplate or spindle
 Tolerance of height A = +/-1,5 mm



* M10 spindle not supplied for M106 footplate

FULLY-THREADED LEVELLING FEET M 2 FIXING

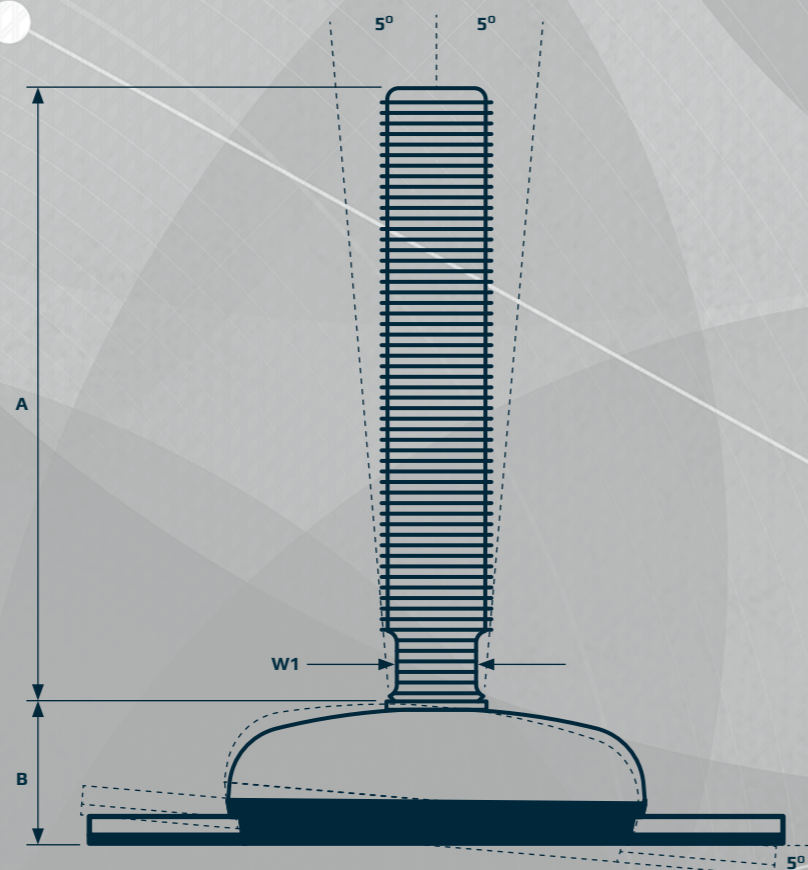
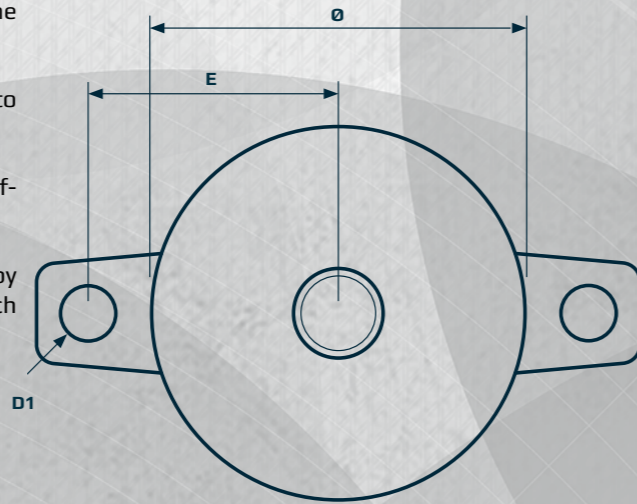
The design and patent protected M Double Fixing fully-threaded levelling foot is the optimal choice for machinery and equipment in diverse production environments.

The M Double Fixing is designed to be fastened to the floor by the two fixing plates. Bolts, nuts and washers can be supplied.

The wide footplate variety makes the Type M Series applicable to all sizes of machinery and equipment.

Lowered cleaning effort is obtained by the design of the self-draining surfaces.

Additionally, the foot is hygienically sealed to the floor by vulcanized FDA-approved, anti-vibration, anti-slip rubber, which blocks out bacteria underneath the footplate.



FULLY-THREADED LEVELLING FEET M 2 FIXING



FOOT PLATE



SPINDLE



PRODUCT CODE **FOOT - THREAD - SPINDLE TYPE**

EXAMPLE M-FIXx2077-10-050

TYPE	DIAMETER Ø [mm]	HEIGHT B [mm]	HOLE POSITION E [mm]	HOLE DIAMETER D1 [mm]	NOM LOAD COMPRESSION [N]	ITEM CODE
77	75	24	52	15	12.000	M-FIXx2077

TYPE ▶	50	70	100	150	180	230	310	W1 [mm]
THREAD	[N]	[N]	[N]	[N]	[N]	[N]	[N]	
M10	3.500	3.500	3.500	3.500	2.000	1.700	-	13
M12	17.000	17.000	17.000	8.000	5.000	3.000	-	10
M16	-	32.000	32.000	29.000	20.000	12.500	7.500	13
M20	-	49.000	49.000	49.000	48.000	30.000	15.000	17
M24	-	70.000	70.000	70.000	70.000	65.000	35.000	19
M30	-	112.500	112.500	112.500	112.500	112.500	95.000	24
M36	-	162.000	162.000	162.000	162.000	162.000	162.000	30
M42	-	220.000	220.000	220.000	220.000	220.000	220.000	36
HEIGHT ▶ A [mm]	53	72	106	147	180	230	313	



Total height
Maximum nominal load
Tolerance of height A

= A + B
= Lowest value for footplate or spindle
= +/-1,5 mm



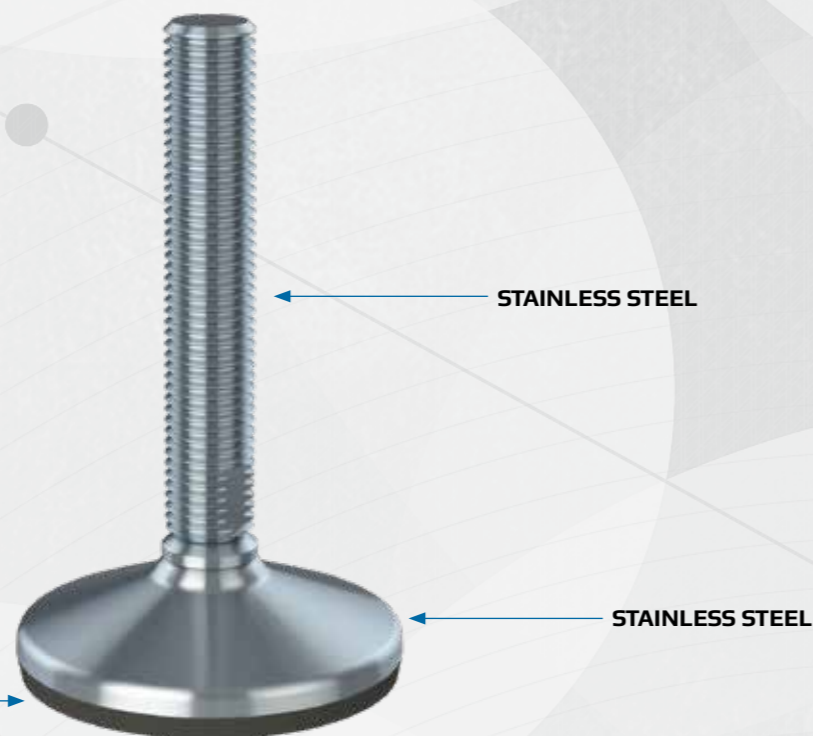
DECLARATION OF CONFORMITY FULLY-THREADED LEVELLING FEET



NGI fundamentally adheres to all applicable directives and standards. All information is based on the current state of knowledge and is subject to change. We attentively follow the revisions and amendments to these directives and will design our products accordingly. This ensures that products from NGI are always in compliance with currently valid requirements.

Our product category is not covered by the scope of application of the EC directive for machinery. For this reason, they cannot be furnished with the CE marking in accordance with the EC directive for machinery.

Furthermore, we declare that the listed materials applied in our products comply with the demands for materials used within the food and pharmaceutical industries.



DECLARATION OF CONFORMITY FULLY-THREADED LEVELLING FEET

THE DECLARATION OF MATERIALS CONCERNS THE FOLLOWING APPLICATIONS

Application:

Material type:

Steel components, e.g. spindle, sleeve and cover for foot

Stainless steel, AISI 304/A2 (X5CrNi18-10), Euro norm 1.4301.

Compliance:

By request: Stainless steel, AISI 316/A4 (X 5 CrNiMo 17 12 2), Euronorm 1.4401

EN 10204 Type 2.2. NGI A/S states that the product is in compliance with the order with indication of results of nonspecific inspection.

NGI has got EN 10204 type 3.1 inspection certificates on all material used in the products but not specified for each foot.

In the directive 94/9/EC, Equipment for potentially explosive atmospheres, also known as the ATEX directive, equipment without its own potential source of ignition are not covered, nor shall be marked according to the directive. However, NGI levelling feet are suitable for use in all ATEX zones.

Application:

Material type:

Foot base for NGI A/S's hygienic machine feet

NBR (NNF-75)

Color:

Black

Hardness:

72 ± 3 Shore A DIN 53 505

Range of temperature:

Min -35°C to Max +110 °C

Compliance:

REACH:

In accordance with regulation EC 1907/2006.

Do not contain any substances above 0.1% (w/w) from:
The Candidate List of Substances of Very High Concern (16.01.2020).

Annex XVII (19-11-2019)

RoHS 2 &

RoHS 3:

ADI free:

Bisphenols:

In accordance with the Directive 2011/65/EC and 2015/863/EC OF EUROPEAN PARLIAMENT AND OF THE COUNCIL OF 27 JANUARY.

Does not contain any substances originating from humans or animals.

Does not contain bisphenols as described in 1895/2005/EEC. Nor BPA, BADGA, BFDGE or NOGE.

ODS:

Does not contain ozone depleting substances. In accordance with the Regulation EC 1005/2009 OF EUROPEAN PARLIAMENT AND OF THE COUNCIL OF 16 SEPTEMBER 2009 and Regulation EC 2037/2000 OF EUROPEAN PARLIAMENT AND OF THE COUNCIL OF 29 JUNE 2000.

Conflict Materials:

In accordance with US Law: "Dodd Frank Wall Street Reform & Consumer Protection Act", sec. 1502, of 21.07.2010.

GMP:

Good manufacturing process in accordance with 2023/2006 EC.

Hazardous Materials:

Does not contain any hazardous substances as described in the Hong Kong International Convention for the Safe and Environmental Sound Recycling of ships, 2009.

Phthalates:

Does not contain phthalates.

FDA:

Guideline 21 CFR 177.2600